

How to connect an industrial Ethernet switch



How to connect an industrial Ethernet switch



If there is no network connection, troubleshoot the network settings on the computer. - Make sure that the switch IP address in the browser is ...



The Industrial Ethernet Series Switches complement the current industrial Ethernet portfolio of related Fiberroad industrial switches, such as the FR-9M, FR-9T and FR-9N Series Switches. The Industrial ...



Key Takeaway To install and configure Industrial Ethernet, start by planning the network layout. Identify the devices to connect, such as PLCs, sensors, and actuators, and ensure you have the right ...



Mount the Switch: Use the provided mounting brackets and screws to secure the switch in the rack. Conclusion Correct installation of industrial switches is key to maintaining reliable network ...



Explore the four main industrial switch installation methods: desktop, rack, DIN rail, and wall mount. Learn the pros, use cases, and best practices for installing industrial Ethernet switches.



In this comprehensive tutorial, we'll walk you through the process of setting up an industrial network switch from start to finish, making it easy for beginners to understand, ensuring a robust ...



If there is no network connection, troubleshoot the network settings on the computer. - Make sure that the switch IP address in the browser is correct. - If the switch IP address in the ...



The Purpose of this User's Manual Thank you for purchasing our Stride™ Industrial Ethernet Switches and Media Converters. This manual describes AutomationDirect 's Stride industrial Ethernet ...



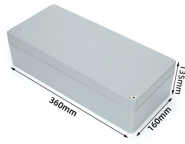
Explore the four main industrial switch installation methods: desktop, rack, DIN rail, and wall mount. Learn the pros, use cases, and best practices for ...



In the IIoT and a wide range of industrial applications, industrial switches serve as the core devices for network connectivity. The correctness of their configuration directly impacts the stability and ...



To connect to your Moxa smart switch for the first time, use a standard Ethernet cable to connect your computer's Ethernet port to any of the switch's Ethernet ports.



Use the Ethernet Interface with an RJ45 Connection ISW-Series provides two types of electrical (RJ45) and optical (mini-GBIC) interfaces. To connect to a PC, use a ...



100 Series Industrial Ethernet Switches Switches support high speed layer 2 switching between ports. This series of switches are housed in a ruggedized aluminum enclosure, and provide Category-5 ...



--- Connect the Uplink Port: This port typically connects the industrial switch to the main network (e.g., router or backbone switch). Use a CAT5e or CAT6 Ethernet cable for standard connections, or ...

Contact Us

For more information, pricing, or custom solutions, please contact us:

Website: <https://www.indzawo.co.za>

Email: sales@indzawo.co.za

Phone: +27 71 296 8473

Address: 22 Quantum Street, Midrand, 1685, Gauteng, South Africa

This document is for informational purposes only. Specifications subject to change without notice.

