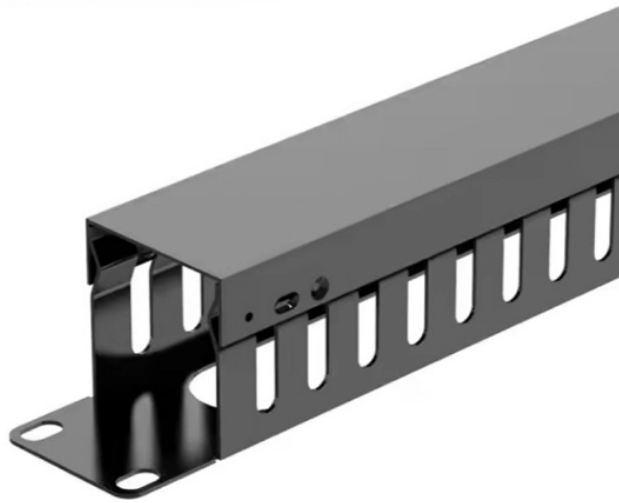


## How to connect 6



### Overview

Here we provide a guide on how to splice 6 gauge wire. Connecting 6-gauge (AWG) wire in a junction box is common for high-demand circuits, such as those powering electric ranges, subpanels, or large air conditioning units. This heavy-duty conductor is typically rated to carry between 55 and 75 amperes, depending on the insulation's temperature rating. Best way to splice 6 gauge wire?

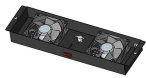
What is the best way to splice/connect 6awg THHN wire in a junction box?

I would use an Ideal 454 blue nut or a 342 Gray "Twister", either can handle #6 wire. Here's what you'll need: Before you begin, remember that working with electricity can be dangerous.

## How to connect 6



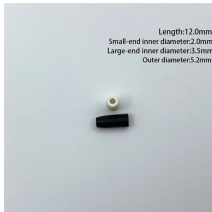
It has 2 voids which max out at #6 wire, and is good for aluminum or copper. The MAC Block's best trick, though, is how it allows multiple smaller wires in one void (provided they are all the ...



Looking for a way to connect 3 sets of #6 in a junction box. Swim Spa calls for the wire to come from the disconnect into a junction box and then into the 2 pumps.



I'm replacing an electrical box in my bathroom that connects to both a vanity light and a fan. The idea is to put in a GFCI outlet and a duplex switch for separate light/fan switching. Right now I'm stuck on ...



Learn how to splice 6 gauge wire safely and effectively! Our guide covers materials, steps, and safety tips for secure connections.



You'll learn the best practices for connecting 6 gauge wire securely, ensuring your junction box can handle the demands of your electrical system. As you read on, you'll gain valuable ...



I have #6 AWG copper wiring running from a 50 amp breaker to a weatherproof 4x4 junction box on the outside of my house. From there it connects to the wall charger through conduit ...



You can splice 6-gauge wiring regardless of the wire type and material. The process won't change if you want to connect copper to copper and aluminum to aluminum.



In this guide, we'll walk you through the steps to safely and effectively connect 6-gauge wire in a junction box.



Master the safe connection of high-amperage 6 AWG wire. Understand box fill, mechanical lugs, and critical torque settings.



I tested the best methods for a 6 gauge wire splice. Discover my tips and tricks for a secure, reliable connection every time!

## Contact Us

For more information, pricing, or custom solutions, please contact us:

Website: <https://www.indzawo.co.za>

Email: [sales@indzawo.co.za](mailto:sales@indzawo.co.za)

Phone: +27 71 296 8473

Address: 22 Quantum Street, Midrand, 1685, Gauteng, South Africa

This document is for informational purposes only. Specifications subject to change without notice.

