

## How to configure the gateway on a fiber optic router

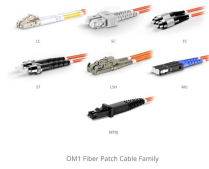


### Overview

To set up your router for fiber internet quickly, connect the router to your fiber modem, access the router's settings via a web browser, and input the provided ISP credentials. Make sure to update the firmware, configure Wi-Fi security, and customize your network name for optimal performance. With. However, setting up a fiber optic connection to your router can seem daunting if you're unfamiliar with the process. Why Use Fiber Optic Internet?

Before diving into the setup, let's quickly. Simply put, a Router Mode ONU is an all-in-one fiber gateway. This means it performs multiple critical tasks in a single, sleek device. Get started with the AT&T Smart Home Manager app.

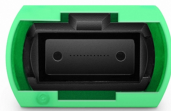
## How to configure the gateway on a fiber optic router



By following this detailed guide, you've not only learned how to connect fiber optic cable to router properly but also how to optimize and maintain that connection for peak performance.



A router ONU combines signal conversion and network routing for fiber-optic internet, letting you connect multiple devices to fast, reliable service at ...



Learn how to connect fiber optic cable to router with our step-by-step guide. Optimize your home network for speed and reliability!



To set up your router for fiber internet quickly, connect the router to your fiber modem, access the router's settings via a web browser, and input the provided ISP credentials. Make sure to ...



By following the steps outlined in this guide, you can successfully configure and set up your router to work seamlessly with AT& T Fiber. Remember to obtain the necessary IP address ...



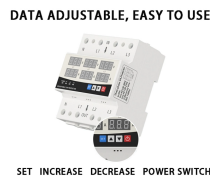
Your BGW320 connects to a fiber jack using a white cable with green tips. Get started with the AT& T Smart Home Manager app. Download the app or scan the QR code on the side of your All-Fi Hub. Then, sign in with your AT& T ID and password. We'll take you step-by-step through the BGW320 setup.



Access the router's settings through a web browser and follow Spectrum's instructions to configure it with your account details. Finally, test the internet connection to ensure proper functionality.



Today I got AT& T Fiber Internet installed at my house, and I thought I'd document a few things I observed during and after the install. They trenched fiber boxes between pairs of houses in ...



In this comprehensive guide, we will walk you through the steps to effectively use your own router with AT& T Fiber service.



Your BGW320 connects to a fiber jack using a white cable with green tips. Get started with the AT& T Smart Home Manager app. Download the app or scan the QR code on the side of ...



However, setting up a fiber optic connection to your router can seem daunting if you're unfamiliar with the process. In this guide, we'll walk you through how to connect a fiber optic...



A router ONU combines signal conversion and network routing for fiber-optic internet, letting you connect multiple devices to fast, reliable service at home.

## Contact Us

For more information, pricing, or custom solutions, please contact us:

Website: <https://www.indzawo.co.za>

Email: [sales@indzawo.co.za](mailto:sales@indzawo.co.za)

Phone: +27 71 296 8473

Address: 22 Quantum Street, Midrand, 1685, Gauteng, South Africa

This document is for informational purposes only. Specifications subject to change without notice.

