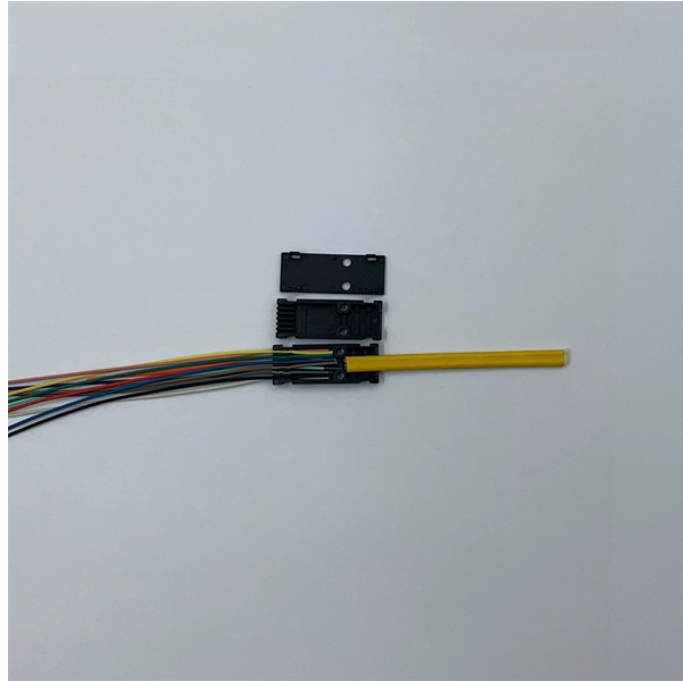


## How to check if a distribution box is installed properly



### Overview

Choose the right box based on environment (indoor/outdoor), load capacity, and durability. Check for proper IP/NEMA ratings and material quality. In this guide, we'll break down everything you need to know to install a distribution box correctly and confidently. Ensure safe placement: install in. Conduct a detailed survey of the installation site to determine the installation location of the cable distribution box. The installation location should be dry and ventilated, away from flammable and explosive substances, corrosive substances, and easy to maintain in the future. Ensure all components are present and undamaged.

## How to check if a distribution box is installed properly



You can diagnose faults in a low voltage distribution box by following clear steps. Start with identifying the fault range, gather evidence, and combine information for accurate results.



Learn how to ensure your electrical installations meet Electrical Junction Box NEC Code Standards. This guide covers sizing, grounding, material selection, and ...



The document provides a 16 item checklist for inspecting a main ...



This post is supposed to provide distribution panel testing and execute commissioning while the inspection checklist is being completed.



When Professional Installation Matters Most While DIY electrical work has its place, distribution box installation isn't it. Consider these real cases: The Lakehouse Disaster: After saving \$1,200 with a ...



The document provides a 16 item checklist for inspecting a main distribution board or panel board.



Select an appropriate installation location with adequate space and access. Ensure the area is clear of debris and obstacles. Verify the ground is level and suitable for installation. Check for any ...



Learn how to install a distribution box safely and correctly. Covers wiring, placement, standards, and expert tips for a compliant setup.



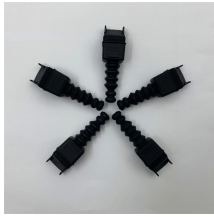
Determining whether a distribution box is properly installed requires a comprehensive assessment from aspects such as installation standards, appearance inspection, internal structure, safety protection, ...



Master the art of Conduit and Box installation with our comprehensive checklist. From proper sizing to accurate positioning, ensure a seamless electrical system.



Inspect the appearance of the distribution box intuitively, check if there are any signs of damage, corrosion, or water ingress, observe the status of the internal component indicators, and ...



Distribution Box Installation: Put the distribution box on the installation surface, and align the position of the expansion bolts and tighten the screws. This step needs to be checked carefully, ...



If you just installed your own new electrical box, and things aren't working properly, it's not fun. The good news is that most issues are easy to troubleshoot, especially if you follow the steps ...

## Contact Us

For more information, pricing, or custom solutions, please contact us:

Website: <https://www.indzawo.co.za>

Email: [sales@indzawo.co.za](mailto:sales@indzawo.co.za)

Phone: +27 71 296 8473

Address: 22 Quantum Street, Midrand, 1685, Gauteng, South Africa

This document is for informational purposes only. Specifications subject to change without notice.

