

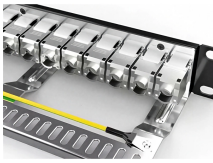
## How to arrange Huijue cable trays



## How to arrange Huijue cable trays



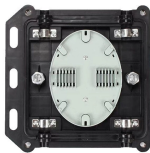
Learn how to manage cables in cable trays effectively with our comprehensive guide for cable classification, protection, and installation to ensure electrical system safety and efficiency.



The following recommendations are intended to be a practical guide to ensure the safe and proper installation of cable ladder and cable tray systems and channel support and other support ...



In the systems fed with single core cables; the cable arrangement and phase sequences should be applied as stated below in single row sequence. There are ...



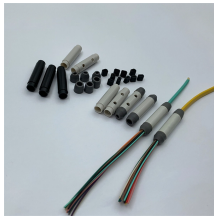
Cable tray length is selected based on the load to be supported, the distance between the supports (also referred to as the span), and handling and installation constraints.



Below are the key principles to guide the layout of E& I cable trays, focusing on practical, safety, and efficiency aspects. 1. Separation of Electrical and Instrumentation Cables. Electrical on Top, ...



In the systems fed with single core cables; the cable arrangement and phase sequences should be applied as stated below in single row sequence. There are many configurations about the systems ...



Signal cables or weak-current cables inside cabinets are sorted by cable managers, cable rings, and cable trays. The cable colors shown in figures are for reference only. Figure A-3, Figure A-4, and ...



This guide covers the critical steps, from selecting the right electrical cable tray and performing accurate cable fill calculations to managing a safe cable pull through and ensuring all bonding and grounding ...



Explore the essentials of cable tray layout and section design in electrical systems, ensuring optimal cable management and support.



Discover the essential guide to cable tray systems. Learn about ladder, trough, and wire mesh types, key components, and expert installation tips for safe and organized cable management.



Mastering cable tray installation is crucial for creating a safe, organised, and efficient cable management system. By following this step-by-step guide, you can ensure a seamless setup that ...



The following recommendations are intended to be a practical ...

## Contact Us

For more information, pricing, or custom solutions, please contact us:

Website: <https://www.indzawo.co.za>

Email: [sales@indzawo.co.za](mailto:sales@indzawo.co.za)

Phone: +27 71 296 8473

Address: 22 Quantum Street, Midrand, 1685, Gauteng, South Africa

This document is for informational purposes only. Specifications subject to change without notice.

