

How to Choose the Size of ASEAN Power Distribution Boxes



Overview

Here are some important things to consider: Feature/Factor Materials: Should be strong, fireproof, and able to handle impacts. Safety Standards: Must follow global safety rules for different uses. Load Capacity: Check how much power and how many circuits you need. Here's the deal: ASEAN's lightning-fast growth means we're adding new buildings, factories, and infrastructure faster than most places on earth. But if our distribution boxes can't handle tomorrow's energy demands, we're building progress on shaky foundations. And let me tell you, watching a. The Gustav Hensel GmbH & Co. KG is a leading company specialising in the manufacture of innovative electrical installation and power distribution systems for facility equipment of buildings. Wherever environmental influences, dust and humidity require a particularly sophisticated installation. Home / blog / Ultimate Guide to Distribution Boxes (DB Boxes): Types, Components, Applications, and How to Choose the Right One For procurement professionals, electrical contractors, and project managers, choosing the right Distribution Box (DB Box) is a critical decision that directly impacts. Whether it's a small electrical breaker box in a residential property or a panel medium voltage cabinet in industrial

environments, selecting the right type, size, and configuration is critical. This guide explores control panels, electrical boxes, breaker panels, bus bars, junction boxes, and. Choose the low voltage distribution box by matching circuit needs, safety standards, and environmental ratings for reliable and safe power distribution.

How to Choose the Size of ASEAN Power Distribution Boxes



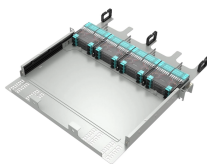
The following are the key points to consider when choosing a distribution box: 1. Load demand analysis: Determine the load demand of the electrical system, including current loads and ...



This ultimate guide explains what a distribution box does, its internal components, common types, real-world applications, and how to select the right DB Box for your project.



The main factors to consider when customizing a distribution box are: Load capacity: Select the distribution box's capacity based on the electricity ...



Choose the low voltage distribution box by matching circuit needs, safety standards, and environmental ratings for reliable and safe power distribution.



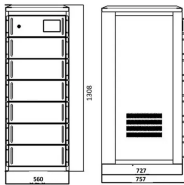
Distribution boxes are the unsung heroes of electricity networks. They divide power flows, protect equipment, and shield us from surges. But travel across ASEAN and you'll see as many variations as ...



This guide explores control panels, electrical boxes, breaker panels, bus bars, junction boxes, and custom enclosures to help you understand their sizes, types, and common applications.



As a small distribution board up to 63A, it is primarily used for the safe and economical power supply in buildings, commercial and industrial applications.



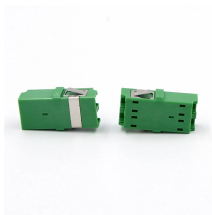
For homes, a small box with basic safety tools works well. Factories need bigger boxes with more circuits and better safety features. Always choose a box that matches your needs to avoid...



In this article, we will briefly outline the seven most important points for the choice of distribution boxes based on actual needs, professional standards, and purchasing experience, so you can make smart ...



This guide provides information on how to select the appropriate Distribution Box for Electric project. If you have any questions about distribution boxes, please feel free to contact us.



The main factors to consider when customizing a distribution box are: Load capacity: Select the distribution box's capacity based on the electricity load's size to ensure that it can meet ...

Contact Us

For more information, pricing, or custom solutions, please contact us:

Website: <https://www.indzawo.co.za>

Email: sales@indzawo.co.za

Phone: +27 71 296 8473

Address: 22 Quantum Street, Midrand, 1685, Gauteng, South Africa

This document is for informational purposes only. Specifications subject to change without notice.

