

How to Choose the Right Stainless Steel Cable Tray Model



10G SFP+ AOC
SFP-10G-AOC**M
1m 2m 3m 5m 7m 10m 15m 20m 25m 30m



25G SFP28 AOC
SFP28-25G-AOC**M
1m 2m 3m 5m 7m 10m 15m 20m 25m 30m



100G QSFP28 AOC
QSFP-100G-AOC**M
1m 2m 3m 5m 7m 10m 15m 20m 25m 30m

AOC
10G 25G
40G 10G



40G QSFP+ AOC
QSFP-40G-AOC**M
1m 2m 3m 5m 7m 10m 15m 20m 30m 50m



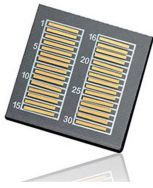
How to Choose the Right Stainless Steel Cable Tray Model



Learn how to choose the best cable tray system for your needs. Explore types, materials, installation tips, and NEC compliance in this expert guide.



Stainless steel has become a global mainstream choice due to its superior corrosion resistance, mechanical strength, and processability. This article focuses on the ...



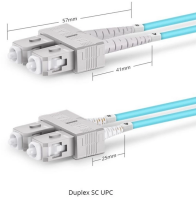
What makes stainless steel cable trays so good is that they are the best to use in a harsh environment. Find out the pros of SS304 and SS316L in long life and rust-free cable management.



Choosing ss cable trays? This guide breaks down ss201 cable tray, ss304 cable tray, and ss316L cable tray. Learn the differences in cost, corrosion, and use for your project.



Stainless steel cable management trays offer a combination of strength, durability, and versatility, making them an essential component in industrial and commercial settings.



Learn how to select the best cable tray for your project with insights on load capacity, corrosion resistance, customization, and common applications.



Stainless steel cable tray has different types for your choice. The main types are as follows, you can refer to the pictures and descriptions and choose the perfect one suitable for you.



What makes stainless steel cable trays so good is that they are the best to use in a harsh environment. Find out the pros of SS304 and SS316L in ...



Oversized trays can lead to wasted space, while undersized trays may compromise functionality. A careful assessment helps ensure optimal performance, striking a balance between durability and cost ...



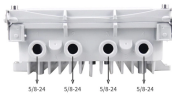
Let's take a look at why cable trays from SILTEC are the best way to manage your cables. Our cable trays are made of first-class stainless steel (AISI 316 and AISI 304) that prevents corrosion and ...



Please allow our cable tray experts to offer these bits of advice when selecting a cable tray to help guide your selection of the right cable tray for every job.



Stainless steel has become a global mainstream choice due to its superior corrosion resistance, mechanical strength, and processability. This article focuses on the differences and advantages of ...



Learn how to choose the best cable tray system for your needs. Explore types, materials, installation tips, and NEC compliance in this expert guide.

Contact Us

For more information, pricing, or custom solutions, please contact us:

Website: <https://www.indzawo.co.za>

Email: sales@indzawo.co.za

Phone: +27 71 296 8473

Address: 22 Quantum Street, Midrand, 1685, Gauteng, South Africa

This document is for informational purposes only. Specifications subject to change without notice.

