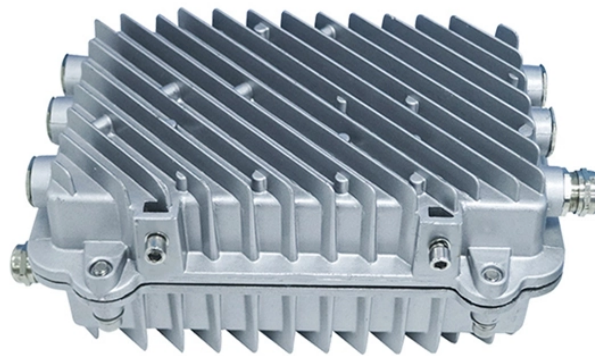


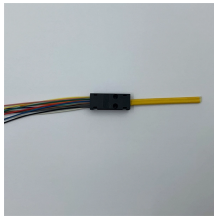
# How to Choose a Home Electrical Distribution Box in West Asia



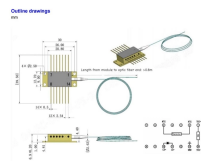
## Overview

Follow this step-by-step guide to ensure you select the right model for your application: Assess Your Power Needs: Calculate total connected load using nameplate ratings of major appliances. 82 for load calculations in dwellings. More than just a metal casing with wires, it's the silent guardian of your household's electrical system—regulating power flow, preventing overloads, and shielding your family from potential hazards. Finally, choose safety devices like RCBOs and Surge Protection Devices (SPD) for the best protection against faults and lightning. Let us look at the details of choosing the right box for your house. Room Socket Circuits (X): By having separate circuits for each room, electrical issues can be isolated, preventing them from. When selecting the right electric distribution box for your home or project, prioritize safety, load capacity, and compliance with local electrical codes.

## How to Choose a Home Electrical Distribution Box in West Asia



At Lianxinda, we've helped thousands of families choose the right home electrical boxes for over a decade. Here's a simple breakdown to make your decision stress-free.



Learn what to look for in an electric distribution box, including types, key features, safety standards, and top buying tips for residential or commercial use.



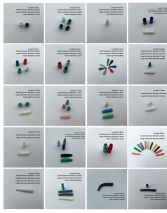
A well-chosen distribution box ensures the safety and efficiency of your household electrical system. This article guides you through selecting a distribution box that is both affordable and safe, ...



Selecting the right electrical box for your project can be confusing because of the many options available. Whether you're starting new construction or adding to existing wiring, ...



A well-chosen distribution box ensures the safety and efficiency of your household electrical system. This article guides you through selecting a distribution box that is both affordable ...



Learn about the many common types of wall and ceiling electrical boxes for switches, outlets, light fixtures, ceiling fans, and junction boxes.



Choosing the right electrical distribution box is one of the most important decisions you'll make as a homeowner. It's not just about complying with Saudi regulations; it's about protecting what ...



Learn how to choose the right home distribution box with our expert guide. Compare circuit capacity, IP ratings, breaker types & avoid common mistakes.

## Contact Us

For more information, pricing, or custom solutions, please contact us:

Website: <https://www.indzawo.co.za>

Email: [sales@indzawo.co.za](mailto:sales@indzawo.co.za)

Phone: +27 71 296 8473

Address: 22 Quantum Street, Midrand, 1685, Gauteng, South Africa

This document is for informational purposes only. Specifications subject to change without notice.

