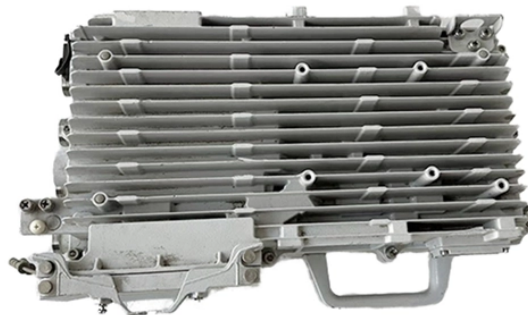


How many tubes connect the 12-core optical cable



Overview

The cable is 6 loose tubes stranded together with filling compound of waterproof system around the central reinforcement steel member. Imm (main cord) Material Stainless Steel Color Silvery White UL94 V-0 (*Burning stops within 10 seconds on a vertical specimen, no drips of flaming particles.)

*Exact product code is subject to the cable length. Specifications are correct at time of printing and subject to change or alteration. UnitekFiber supplies OSP (Outside Plant) GYTS fiber cable. GYTS armored fiber optic cable is stranded loose tube outdoor cable with metal strengthening member.

PARAMETER SPECIFICATIONS Corning ribbon plenum cables are designed for use in plenum, riser and general purpose environments for intrabuilding backbone installations and for high-fiber-count data centers. These cables consist of 12 to 216 fibers organized into 12-fiber ribbons inside a central tube. 655CD single mode 250 μ m multi-loose tube rodent resistant internal/external (I/E) duct cables with e-glass strength members, and Low Smoke Zero Halogen (LSZH) jacket. 3 to 10 microns that has one mode of transmission. Single Mode Fiber with a relatively narrow diameter, through which only one mode will propagate typically 1310 or 1550nm.

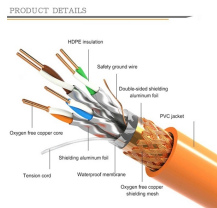
How many tubes connect the 12-core optical cable



The modular design of loose-tube cables typically holds up to 12 fibers per buffer tube with a maximum per cable fiber count of more than 200 fibers. Loose-tube cables can be all-dielectric or optionally ...



SPECIFICATIONS.



GYTA53 fiber cable consists of 250um fibers held in gel-filled PBT loose tubes, and wrapped around a phosphatized steel wire central strength member. A waterproof compound fills the ...



These cables consist of 12 to 216 fibers organized into 12-fiber ribbons inside a ...



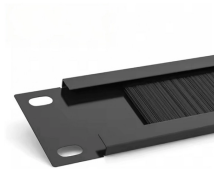
Specifications are correct at time of printing and subject to change or alteration without notice.



These cables consist of 12 to 216 fibers organized into 12-fiber ribbons inside a central tube. Dielectric strength members provide tensile strength while a specially formulated flame-retardant outer jacket ...



UnitekFiber supplies OSP (Outside Plant) GYTS fiber cable. The cable is 6 loose tubes stranded together with filling compound of waterproof system around the central reinforcement steel member.



At its core, the cable houses 12 individual fibers, each capable of carrying a distinct data channel. These fibers are multimode type, meaning they allow multiple modes or light paths within each fiber, which ...



According to the IBDN standard, we generally recommend using 12 cores for the communication room in each building, and 24 cores for the building room. Of course, this is a general ...



Multi loose tube cable construction consists of 6 gel filled tubes with 12 x 250µm optical fibers with fillers where appropriate.



In case any core fails in the OTDR test & found defective, the entire cable will be rejected. Such cable drum will be replaced with a new drum without any additional cost to IOCL.



This document provides specifications for a 12 core armored direct buried double jacket PE cable design. It includes: 1) A central steel wire strength member surrounded by 6 loose thermoplastic ...

Contact Us

For more information, pricing, or custom solutions, please contact us:

Website: <https://www.indzawo.co.za>

Email: sales@indzawo.co.za

Phone: +27 71 296 8473

Address: 22 Quantum Street, Midrand, 1685, Gauteng, South Africa

This document is for informational purposes only. Specifications subject to change without notice.

