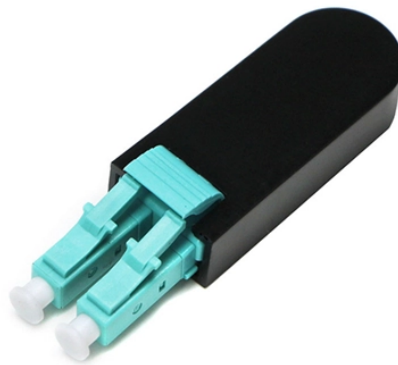


## How many servers can be placed in a micro-module



### Overview

It has the ability to support up to six Intel® Server Compute Modules, up to fourteen 2.5" SAS/SATA/SSD, as well as two Ethernet Switch Modules, integrated SAN, and a Management Module. product brief intel® Modular Server The Intel® Modular Server is a business-in-a-box server system with seamless installation, migration, and growth capabilities, integrating storage, computing, and networking to simplify complex IT environments. A Compute Module contains the core components of a Raspberry Pi but without the standard connectors like HDMI, USB, or. Micro data centers offer a compact, cost-effective alternative to traditional facilities, bringing critical compute and storage closer to where it's needed. Image: Alamy Building a full-scale, traditional data center requires millions of dollars and many months of construction. It's an endeavor. Application□ The micro-module data center is designed to deal with the changes of cloud computing, virtualization, centralization, high density and other servers, improve the operation efficiency of the data center, reduce energy consumption, and achieve rapid expansion without affecting each. A blade server is a stripped-down server computer with a modular design optimized to minimize the use of physical

space and energy. ATTENTION: Identifies information about practices or circumstances that can lead to personal injury.

## How many servers can be placed in a micro-module



Micromodule data center refers to a complete data center which can be backed up by multiple micro-modules with independent functions and unified input and output interfaces and micro-modules in ...



Density optimized solution in a blade form factor with a 3U/6U enclosure that contains switches, chassis management module for cloud and enterprise data center





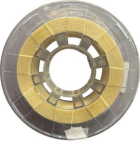



Learn what a micro data center is, why it may suit your business, and how to build one without the cost and complexity of a full-scale facility.



The document describes three intelligent micro-module data center solutions: Fit Atom single cabinet, Fit Array single-row, and Fit Atrix double-row. Fit Atom is a single cabinet solution for small spaces. Fit ...



Scalable Server c ompute capacity Supports up to six Server Compute Module based on the Intel® Xeon® processor E5-2600 product family.

|   |   |
|---|---|
|    | <p>This unit has all the necessary components, such as power, cooling, networking, and IT infrastructure (servers, storage, etc.). This modularity allows ...</p>   |
|    | <p>Unlike a rack-mount server, a blade server fits inside a blade enclosure, which can hold multiple blade servers, providing services such as power, cooling, networking, various interconnects and ...</p>                  |
|   | <p>This unit has all the necessary components, such as power, cooling, networking, and IT infrastructure (servers, storage, etc.). This modularity allows for easier scaling of a data center by ...</p>                      |
|  | <p>You can create a full Device Tree for a Compute Module product, but we recommend using overlays instead. Overlays add descriptions of non-board-specific hardware to the base Device Tree.</p>                             |
|  | <p>This manual is a reference guide for Micro800 controllers, plug-in modules, and accessories. It describes the procedures you use to install, wire, and troubleshoot your controller. This manual:<br/>Explains how ...</p> |
|  | <p>Learn more Compare SuperServer (2.5" HDDs) SuperServer (3.5" HDDs) Server (A+ Server) SuperStorage SuperBlade MicroBlade Motherboards (Intel DP) Motherboards (Intel UP) ...</p>   |

## Contact Us

For more information, pricing, or custom solutions, please contact us:

Website: <https://www.indzawo.co.za>

Email: [sales@indzawo.co.za](mailto:sales@indzawo.co.za)

Phone: +27 71 296 8473

Address: 22 Quantum Street, Midrand, 1685, Gauteng, South Africa

This document is for informational purposes only. Specifications subject to change without notice.

