

# How many optical ports does the Huijue switch have



## Overview

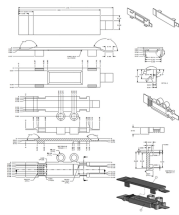
8x10/100/1000Base-T Ethernet ports, 2xGE SFP ports 24x10/100/1000Base-T Ethernet ports, 4xGE SFP ports AC power supply, supporting Redundant Power Supply (RPS) Two models: AC model and DC model, supporting RPS 24x10/100/1000Base-T Ethernet AC power supply . 8x10/100/1000Base-T Ethernet ports, 2xGE SFP ports 24x10/100/1000Base-T Ethernet ports, 4xGE SFP ports AC power supply, supporting Redundant Power Supply (RPS) Two models: AC model and DC model, supporting RPS 24x10/100/1000Base-T Ethernet AC power supply . A 10/100/1000BASE-T Ethernet electrical port sends and receives service data at 10/100/1000 Mbit/s. 5GE SFP Ethernet optical port sends and receives service data at 100 Mbit/s, 1 Gbit/s, or 2. The S310S-26PN4JX model is used as an example. Non-PoE models do not have PoE indicator and. They are purposebuilt with security, IoT, and cloud in mind. With these traits, CloudEngine S6730-H-V2 can be widely used in enterprise campuses, colleges/universities, data centers, and other scenarios. They also support cloud management and implement cloud-managed network services. How to Configure Optical Ports on Huawei S5720-32P-EI-AC Switch?

Problem: All optical ports cannot be connected, and the indicator lights are not on. Solution: To solve this problem, you can follow these steps: Check if the fiber and optical modules are compatible. Features: Square LED work light emits a powerful white light for industrial, agricultural, and marine applications Flood beam illuminates a wide area Great for work trucks, utility vehicles, and fishing boats Aluminum construction and built-in heat sink. Optical modules are widely used in switches, network interface cards (NICs), routers, and other communication devices. During use, reading optical module information helps understand its real-time operating status, enabling faster troubleshooting of link abnormalities. Building on next-generation, high-performance hardware and the Huawei Versatile Routing Platform (VRP), the S5700-LI supports Advanced Hibernation Management (AHM).

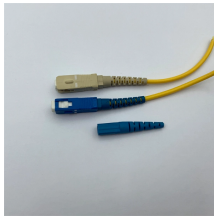
## How many optical ports does the Huijue switch have



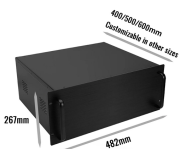
They are purposebuilt with security, IoT, and cloud in mind. With these traits, CloudEngine S6730-H-V2 can be widely used in enterprise campuses, colleges/universities, data centers, and other scenarios. ...



This article summarizes several solutions for using optical modules with switches and common problems encountered during usage, along with specific solutions.



Optical modules are widely used in switches, network interface cards (NICs), routers, and other communication devices. During use, reading optical module information helps understand its real ...



CloudEngine S5736-S series switches provide 48 downlink optical ports and four 10GE uplink optical ports. Based on the innovative RTU mode (only S5736-S48S4X-A/D support), the downlink port rate ...



Huawei CloudEngine S6730-H series 10GE switches are next-generation enterprise-class core and aggregation switches that provide 10GE downlink optical ports and 100GE uplink optical ports.



HUIJUE OCS OPTICAL SWITCH null, HUIJUE OCS OPTICAL SWITCH datasheet free, HUIJUE OCS OPTICAL SWITCH PDF, HUIJUE OCS OPTICAL SWITCH buy price, HUIJUE OCS OPTICAL ...



Get the detailed specs for the Nintendo Switch™ - OLED Model, the Nintendo Switch, and the Nintendo Switch Lite systems, plus Joy-Con controllers, and more.



It can support 1G/10G/25G/40G/100G optical uplink ports, provides one extended slot to support 8\*10GE or 8\*25GE subcards, meets various device interconnection requirements and can be seamlessly ...



Many friends have a doubt that the optical module I got is brand-new in appearance, but I don't know how to query the relevant information of the optical module. Today, ETU-LINK will ...



Explore our collection of huijue 48-port outdoor industrial-grade switch to find the perfect solution and get back to adventuring!



With its eight fixed 10GE SFP+ ports, the S5710-HI can have different subcards installed to provide flexible combination of ports, including 48xGE+8x10GE, 96xGE+8x10GE, 96xGE+12x10GE, and ...



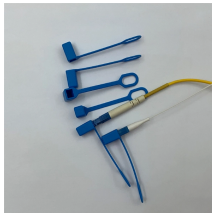
Power Supply System The switch has a built-in AC power module and does not support pluggable power modules. The device provides 24 PoE ports. The maximum output power of a PoE port is 30 ...



The 24 downlink CSFP ports can provide 48 Gbit/s bandwidth bidirectionally, implementing high-density access (equal to access of 48 standard SFP ports) and saving the cost of deploying fibers and ...



With such robust security features, CloudEngine S6730-H switches transform. traditional passive security defense into proactive security protection, fully ...



The standards define the rate, wavelength, and transmission distance of optical modules, but not their encapsulation modes (two interoperated optical modules can have different ...

## Contact Us

For more information, pricing, or custom solutions, please contact us:

Website: <https://www.indzawo.co.za>

Email: [sales@indzawo.co.za](mailto:sales@indzawo.co.za)

Phone: +27 71 296 8473

Address: 22 Quantum Street, Midrand, 1685, Gauteng, South Africa

This document is for informational purposes only. Specifications subject to change without notice.

