

How many network cables can a 200mm cable tray hold



Overview

Thus, the cable tray can accommodate approximately 354 cables with a diameter of 12 mm. Cable Size: The diameter of the cable affects how many can fit within the available space. Allowable Fill Capacity: To maintain proper ventilation and. This calculator determines the maximum number of cables that can be safely housed within a cable tray based on its dimensions and the cross-sectional area of the cables. Follow these simple steps: Define Tray Dimensions: Enter the width and depth of your planned cable tray (in mm or inches). Select Fill Standard: Choose 40% for power cables (NEC compliant) or 50% for. What is the fill capacity and remaining capacity of my cable tray?

Calculate cable tray sizing and fill capacity based on tray dimensions, cable diameter, number of cables, and maximum fill percentage per electrical code.

How many network cables can a 200mm cable tray hold



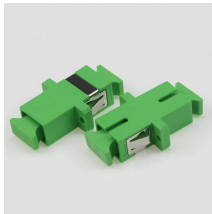
Standard NEC (National Electrical Code) Rule:
Generally, you should not exceed a 40% to 50% fill ratio for control and signal cables. Our calculator ...



Allowable Fill Capacity: To maintain proper ventilation and allow for future maintenance, industry standards suggest filling cable trays to a maximum of 40% for data cables and 50% for ...



Calculate cable tray sizing and fill capacity based on tray dimensions, cable diameter, number of cables, and maximum fill percentage per electrical code. Determine whether cables fit within safe fill limits.



This calculator uses cable sizes and tray dimensions to produce a planning estimate of fill. Different tray types and standards use different calculation methods, so treat the result as a starting point and ...



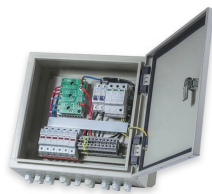
Easily calculate cable tray fill ratios with our free tool. Supports mixed cable sizes, NEC 40% rules, and metric/imperial units. Download your PDF report instantly.



Enter the dimensions of the cable tray, the desired fill ratio, and the diameter of the cables to calculate the cable tray capacity. This calculator helps determine the maximum number of cables ...



The the following sections of this page tables and formulas are provided to help determine how many cables can be safely carried by each size wire mesh / cable tray.



Standard NEC (National Electrical Code) Rule: Generally, you should not exceed a 40% to 50% fill ratio for control and signal cables. Our calculator uses a visual "Limit Marker" to help you stay ...



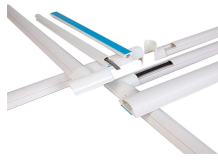
Learn how to calculate mesh cable tray load capacity for power, control, Ethernet, and fiber cables. Understand NEC fill requirements, grounding rules, and...



This calculator determines the maximum number of cables that can be safely housed within a cable tray based on its dimensions and the cross-sectional area of the cables.



Allowable Fill Capacity: To maintain proper ventilation and allow for future maintenance, industry standards suggest filling cable trays to a maximum ...



Use this handy load guide to determine the capacity of your wire mesh cable tray. Always plan for extra space in wire mesh cable trays during the initial installation to allow capacity for future cable additions.

Contact Us

For more information, pricing, or custom solutions, please contact us:

Website: <https://www.indzawo.co.za>

Email: sales@indzawo.co.za

Phone: +27 71 296 8473

Address: 22 Quantum Street, Midrand, 1685, Gauteng, South Africa

This document is for informational purposes only. Specifications subject to change without notice.

