

## How long and wide are the conduits in the distribution box



### Overview

For most standard commercial and residential installations, PVC conduit trade sizes range from 1/2 inch to 6 inches. The right size depends strictly on the National Electrical Code (NEC) 40% fill capacity rule. A conduit body is a removable-cover section of a conduit system that provides access at junctions or termination points. Article 314 applies to: These. When installing insulated conductors of 4 AWG or larger, the minimum dimensions of pull or junction boxes installed in a raceway or cable run must comply with 314.



## How long and wide are the conduits in the distribution box



Conduit bodies are permitted if they comply with box dimensions. For straight pulls, the box length should be at least 48 times the diameter of the largest shielded conductor and 32 times for nonshielded.



Find complete dimensions, OD/ID, and wall thickness for PVC electrical conduits. Instant sizing chart for Schedule 40, Schedule 80, and DB utilities duct.



Clearance: Electrical panels must be installed in a readily accessible area with a minimum clearance of 30 inches (762 mm) wide, 3 ft (36 inches or 914 mm) deep, and 6.5 feet ( $\approx$  2 meter) high in front of ...



A junction box contains two 3-in. raceways on the left side, one 3-in. raceway on the right side, and one 3-in. raceway on the bottom. The conductors from the lower 3-in. raceway on the left ...



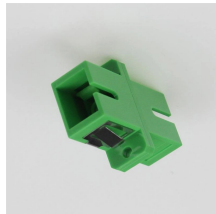
The adjective long describes something that stretches over a large distance. If you're trying to avoid a prolonged visit with your crazy Aunt Martha, you might decide to take the long way to her house.



Know the size of the conduit that enters the box. For straight pulls, you multiply the conduit diameter by 8 to get the width of the face where the conduit enters.



For angle pulls, U pulls or splices, the distance between each raceway entry inside the box or conduit body and the opposite wall of the box or conduit body shall not be less than six times the trade size ...



long meaning, definition, what is long: measuring a great length from one end to...: [Learn more.](#)



Proper junction box sizing is crucial for safe electrical installations. Our junction box sizing calculator simplifies NEC compliance by automatically calculating minimum dimensions based on your specific ...



Choosing the right electrical junction box size is crucial for safety and code compliance in your US projects. This guide helps you determine the correct dimensions based on wire fill capacity, ...



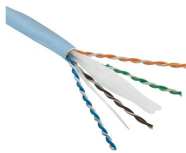
long, yearn, hanker, pine, hunger, thirst mean to have a strong desire for something. long implies a wishing with one's whole heart and often a striving to attain. yearn suggests an eager, restless, or ...



Long is used in expressions such as all year long, the whole day long, and your whole life long to say and emphasize that something happens for the whole of a particular period of time.



A junction box houses wiring connections, protecting them from damage and containing sparks to prevent fires. But sizing it correctly isn't just best practice—it's a critical safety requirement ...



For angle pulls, U pulls or splices, the distance between each raceway entry inside the box or conduit body and the opposite wall of the box or conduit body shall not ...



LONG definition: 1. continuing for a large amount of time: 2. being a distance between two points that is more than.... Learn more.



At or to a considerable distance; far. She walked long past the end of the trail.



Regardless of the wiring method, box fill calculations apply equally to all cables. Use our conduit fill calculator to determine the calculation in your specific case.



Choosing the right electrical junction box size is crucial for safety and code compliance in your US projects. This guide helps you determine the correct ...

## Contact Us

For more information, pricing, or custom solutions, please contact us:

Website: <https://www.indzawo.co.za>

Email: [sales@indzawo.co.za](mailto:sales@indzawo.co.za)

Phone: +27 71 296 8473

Address: 22 Quantum Street, Midrand, 1685, Gauteng, South Africa

This document is for informational purposes only. Specifications subject to change without notice.

