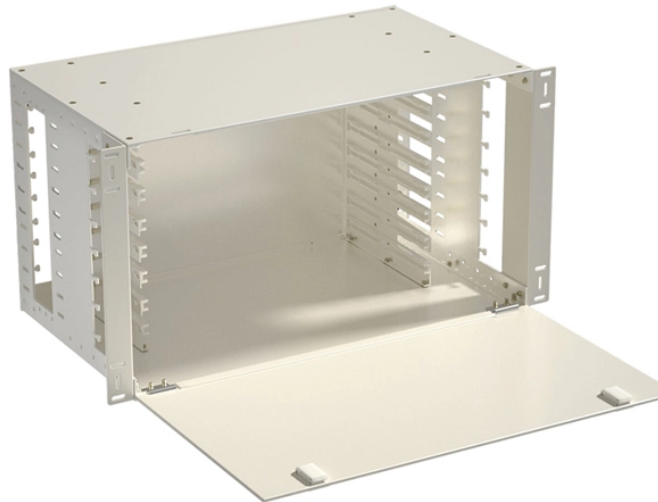


## Horizontal installation of cable trays



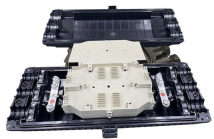
### Overview

Horizontal adjustment is proportionate to the length of the vertical rods. Position the clamps (SC) around the siderails of the. en completely installed, without damage either to conductors or structural system use maintain spacing or to keep cables in place when the tray is ect the minimum bend radius for cables as they exit the bottom of the cable tray. A rung spacing of 6 to 9 inches (150 to 230 mm) is preferable when. We have more than a decade's worth of experience making and designing quality cable tray and cable management systems. Our knowledgeable production team works closely with each customer to provide quality solutions based on your schedule and budget. The following pages address the 2014 National Electrical Code® requirements for cable tray systems as well as design solutions from practical experience.

## Horizontal installation of cable trays



Cable tray length is selected based on the load to be supported, the distance between the supports (also referred to as the span), and handling and installation constraints.



Adjective horizontal (comparative more horizontal, superlative most horizontal) Perpendicular to the vertical; parallel to the plane of the horizon; level, flat. horizontal lines



Horizontal generally refers to a direction or orientation that is parallel to the ground or a flat surface. It can also refer to something that is at the same level or on the same plane as a specific reference ...



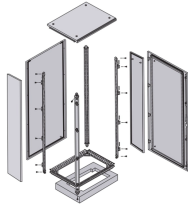
Proper planning for installing cable tray includes calculations based on loading, support systems, cable/wire fill and spacing, conductor types, securing of the cables and wire, and proper grounding ...



Some of these criteria include the required load that the cable tray must support, the distance between the cable tray supports, and ease of handling and installation.



) To install: place 1 part of cover clamp around trough tray cover and tray assembly. Place 2nd part around opposite end of Trough Tray, align clamp holes and install hardware.



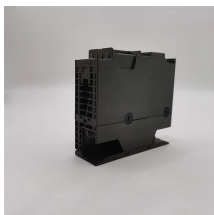
Definition of horizontal adjective in Oxford Advanced Learner's Dictionary. Meaning, pronunciation, picture, example sentences, grammar, usage notes, synonyms and more.



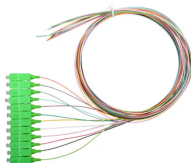
HORIZONTAL definition: 1. parallel to the ground or to the bottom or top edge of something: 2. a horizontal line.... Learn more.



Define horizontal. horizontal synonyms, horizontal pronunciation, horizontal translation, English dictionary definition of horizontal. adj. 1. Of, relating to, or near the horizon.



When fitting cable trays and their accessories, the products are cut on site to create changes of direction, adjust sections, etc. Damage can also occur during handling; as a result, both the ...



Parallel to the horizon; at right angles to the direction of gravity at any station; being on a level; not vertical nor inclined: as, a horizontal line or surface; a horizontal position.



The opposite of vertical, something horizontal is arranged sideways, like a person lying down. When you sleep (unless you're a horse), your body is horizontal: horizontal things are parallel to the ground or ...



This guide covers the critical steps, from selecting the right electrical cable tray and performing accurate cable fill calculations to managing a safe cable pull through and ensuring all bonding and grounding ...



Equipped with a removable **Mounting Plate** inside the enclosure, enabling customized drilling and secure component mounting.

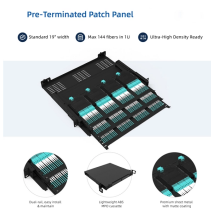
Horizontal definition: Of, relating to, or near the horizon.



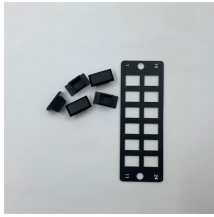
The meaning of HORIZONTAL is of or relating to the apparent junction of earth and sky : situated near the horizon. How to use horizontal in a sentence.



Hubbell's NEXTFRAME® Ladder Tray is the effective and widely used cable runway that supports and delivers bundles of cable between cabinets, racks, and closets, along walls, and suspended from ...



Horizontal vs. Vertical When it comes to positioning, there are two main directions: horizontal and vertical. Each direction has its own unique features and benefits, and knowing when to use each one ...



Discover the essential cable tray spacing requirements for safe and efficient installation. Learn key standards, horizontal and vertical spacing, and more.



Center hung tray supports allow for quicker and easier cable installation by allowing cables to be deposited into tray systems from each side. There is a maximum load capacity per hanger of 318 kg ...



Installation and maintenance of cable tray wiring systems should be performed by a minimum of two qualified technicians. For the purposes of this guideline, a qualified technician is one who is familiar ...

## Contact Us

For more information, pricing, or custom solutions, please contact us:

Website: <https://www.indzawo.co.za>

Email: [sales@indzawo.co.za](mailto:sales@indzawo.co.za)

Phone: +27 71 296 8473

Address: 22 Quantum Street, Midrand, 1685, Gauteng, South Africa

This document is for informational purposes only. Specifications subject to change without notice.

