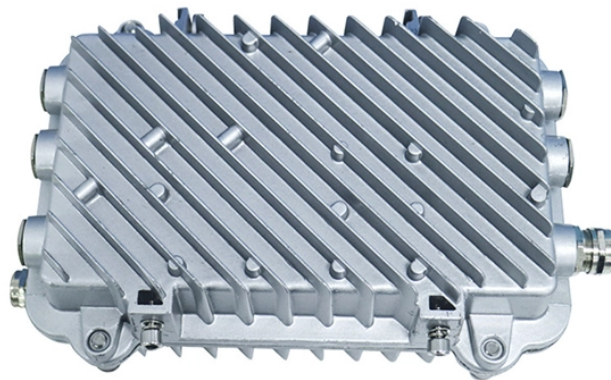


Horizontal cable tray cover plates do not need to be fixed



Overview

There are no specific requirements the cover the securing of single conductors to the tray. No securing is required for a horizontal cable tray run. Section 3 "Installation" covers all aspects of cable tray installation from the basics to pulling cable. Bonding jumpers are not required. This is a description of how to select, install, and support these metal or plastic frames, on which electrical wires are installed. Our Cable Tray Design Considerations Guide. en completely installed, without damage either to conductors or structural system use maintain spacing or to keep cables in place when the tray is ect the minimum bend ra-dius for cables as they exit the bottom of the cable tray. U-bolts are commonly used for ladder-type trays, vertical risers, and trays installed on engineered strut structures. Available in stainless steel, galvanized steel, and specialty.

Horizontal cable tray cover plates do not need to be fixed



The flexible horizontal adjustable splice plates are designed to allow for horizontal direction changes when standard horizontal fittings do not conform. The splices are furnished in pairs and include ...



This section starts out covering areas where cable tray cannot be installed and then covers the basic tools required for cable tray installation. From here it goes into the many types of supports and ...



No securing is required for a horizontal cable tray run. Other than horizontal runs just require that the conductors be "fastened securely to transverse members of the cable runs".



Selecting the right cable tray accessories is crucial for the safety, stability, and ease of maintenance of any electrical system. This article provides a comprehensive guide on the different ...



If it has excellent electrical continuity and is integrated in the installation's equipotential bonding system, a metal cable tray reduces the coupling's impact and thus contributes to good EMC of the electrical ...



Our wind certification report provides you with list of acceptable B-Line series cable tray supports, fittings and covers based off of the environmental conditions, cable loading, and type of cable tray in your ...



The NEC does not invariably need covers, although they are a very clever addition. They should be used in case the tray is located in a high-traffic area where tools may drop on the wires.



Cable tray is considered to be a system. It must provide continuous support for cables, and the electrical continuity of the cable tray system must be maintained.



Solid bottom steel cable trays with solid covers and wrap around cover clamps can be used to provide EMI/RFI shielding protection for sensitive circuits.



Four different mesh cable tray types are available, depending on the requirements, area of application and cable quantity. The innovative Magic connection system of the GRM and G-GRM mesh cable ...

Contact Us

For more information, pricing, or custom solutions, please contact us:

Website: <https://www.indzawo.co.za>

Email: sales@indzawo.co.za

Phone: +27 71 296 8473

Address: 22 Quantum Street, Midrand, 1685, Gauteng, South Africa

This document is for informational purposes only. Specifications subject to change without notice.

