

Horizontal and vertical cable trays single side



Horizontal and vertical cable trays single side



Steel cable trays are fabricated from continuous roll-formed structural quality steel. By roll-forming steel, the mechanical properties are increased allowing the use of a lighter gauge steel to carry the ...



Choose from our selection of cable and hose trays, including over 60 products in a wide range of styles and sizes. Same and Next Day Delivery.



Hubbell's NEXTFRAME® Ladder Tray is the effective and widely used cable runway that supports and delivers bundles of cable between cabinets, racks, and closets, along walls, and suspended from ...



When fitting cable trays and their accessories, the products are cut on site to create changes of direction, adjust sections, etc. Damage can also occur during handling; as a result, both the ...



Cable tray length is selected based on the load to be supported, the distance between the supports (also referred to as the span), and handling and installation constraints.



Ladder Trays Ladder 3D Drawings Explore our full collection of Metallic Ladder 3D Drawings, including horizontal fittings, vertical fittings and metallic tray.



Our cable tray design considerations guide details key factors to consider when designing cable tray systems for industrial and commercial applications. Browse ...



Organize network infrastructure with CommScope Horizontal and Vertical Cable Management Kits. Sturdy aluminum structures, troughs, spools, and trays keep cables secure and concealed.



We recommend that covers on vertical cable tray runs to a height of 6 ft. (1.83 m) to 8 ft. (2.44 m) above the floor to both isolate cables and personnel. Cover clamps are not included with the cover and ...



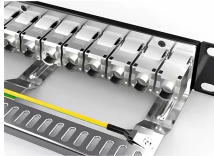
Users can achieve design flexibility with numerous sizes of horizontal and vertical elbows, adjustable elbows, cross pieces, tees, reducers, and branches. Atkore customer service experts can help ...



The SRCABLETRAY1U SmartRack 1U Horizontal Cable Management Tray cuts down on cable clutter and stressed connections by safely supporting and segregating the equipment cabling from either ...



corresponding to the straight cable tray sections. These fitting are including: elbow, horizontal cross, vertical inside riser, reducers, cover clip, joint connector, horizontal



Multiple anchor points across the tray provide cable strain relief and prevent accidental disconnection. Made from steel with a black powder-coated finish to match most racks, the SRCABLETRAY1U ...

Contact Us

For more information, pricing, or custom solutions, please contact us:

Website: <https://www.indzawo.co.za>

Email: sales@indzawo.co.za

Phone: +27 71 296 8473

Address: 22 Quantum Street, Midrand, 1685, Gauteng, South Africa

This document is for informational purposes only. Specifications subject to change without notice.

