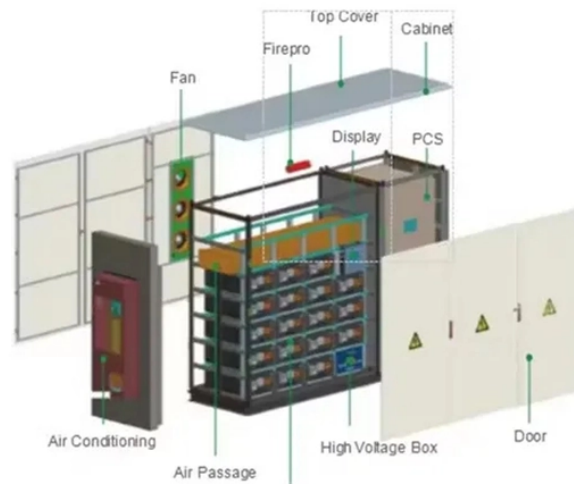


High-voltage distribution box fault diagnosis

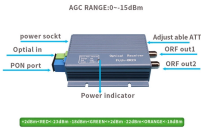


Overview

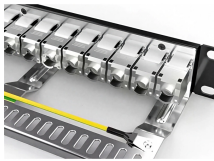
This guide will provide comprehensive insights into safe operating procedures and effective fault diagnosis, helping you maintain a secure and reliable power system. The increasing integration of renewable energy sources and distributed generation imposes significant operational challenges, necessitating advanced. The application discloses a fault diagnosis method and a storage medium of a high-voltage distribution box PDU module, wherein the diagnosis method comprises the following steps: the method comprises the steps of dividing faults of a high-voltage distribution box PDU module into contactor adhesion. We are proud to offer a wide variety of quality high voltage test equipment for the electrical industry. With over 33 years of experience in electrical cable testing, diagnostics and oil testing, we are industry leaders in these fields. 6kV to 550kV, encompassing high-voltage circuit breakers, disconnectors. This paper presents an extensive review of the most effective and modern monitoring methods for electrical power lines, with particular attention to high-voltage (HV) and medium-voltage (MV) systems. From a general point of view, the main objective of these techniques is to prevent catastrophic. High-voltage circuit breakers are core control and

protection equipment in power systems, and their operational status directly affects device stability and power grid security.

High-voltage distribution box fault diagnosis



high, tall, and lofty mean being above the usual level in height. high is used for things and not people, and it refers to distance from the ground or some other surface. A high fence surrounded the house. ...



HIGH definition: having a great or considerable extent or reach upward or vertically; lofty; tall. See examples of high used in a sentence.



Abstract This paper reviews fault identification and predictive maintenance techniques essential for the reliable operation of high-voltage power systems.



Definition of high adjective in Oxford Advanced American Dictionary. Meaning, pronunciation, picture, example sentences, grammar, usage notes, synonyms and more.



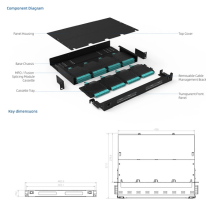
In this context, a comprehensive examination of the key methodologies for diagnosing and predicting faults in electrical power lines becomes highly valuable.



It's two and a half metres high and one metre wide. The corn grew waist-high (= as high as a person's waist) in the fields. high The garden is surrounded by a high wall. tall Mount Everest is the world's ...



Improving the accuracy of their fault detection is a key demand for the operation and maintenance of power equipment. This study proposes a fault detection method for high-voltage ...



high implies marked extension upward and is applied chiefly to things which rise from a base or foundation or are placed at a conspicuous height above a lower level.



With the development of new energy vehicles, the detection and fault diagnosis of high voltage system of new energy vehicles are becoming more and more important.



Evaluate the average life of the high-voltage distribution box, identify key components, provide a reference for engineers and technicians to estimate reliability, and lay the foundation for reliability ...



With an analysis of the basic situation of abnormal discharge fault happened in high-speed EMU high voltage box, the principles of the main circuit in high voltage box and the fault...



If something is high, it is a long way above the ground, above sea level, or above a person or thing. I looked down from the high window. The bridge was high, jacked up on wooden piers. The sun was ...



In order to overcome the defects of the prior art, the embodiment of the application provides a fault diagnosis method and a storage medium for a high-voltage distribution box PDU...



Help choose the right school for a move or get contact info for all high schools in Riverside, CA.



High (adjective, informal): Intoxicated by drugs or alcohol. The word "high" is a versatile term with multiple meanings and applications, spanning physical elevation, emotional states, and ...



In daily power operations, proper handling and troubleshooting of high-voltage switchgear are paramount. This guide will provide comprehensive insights into safe operating procedures and ...



In addition to being a leading supplier and manufacturer of electrical test equipment, we also offer excellent technical support and provide specialized electrical testing services that include cable ...



In this study, we propose an unsupervised fault detection and segmentation framework for condition monitoring of CBs with an XAI approach integrated into the framework to achieve fault ...

Contact Us

For more information, pricing, or custom solutions, please contact us:

Website: <https://www.indzawo.co.za>

Email: sales@indzawo.co.za

Phone: +27 71 296 8473

Address: 22 Quantum Street, Midrand, 1685, Gauteng, South Africa

This document is for informational purposes only. Specifications subject to change without notice.

