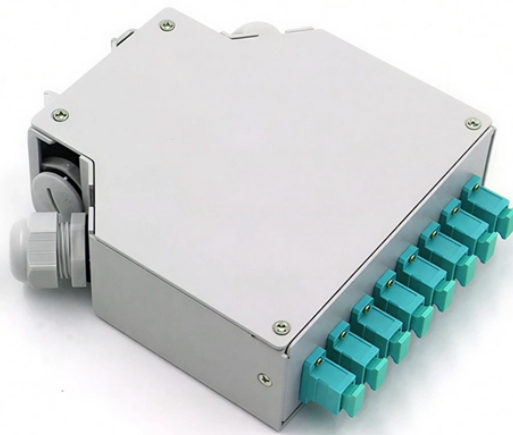


## High-temperature resistant distribution network automation for emergency communication



### Overview

To this end, this paper provides a comprehensive exploration of the technological solutions and strategies necessary to build and maintain resilient communications networks that can withstand and quickly recover from disaster scenarios. This study uses the IEEE 33-node system as its research subject to analyze the comprehensive impact of temperature variations on the voltage distribution, line losses, and reliability of distribution networks. The guide also provides details on the system's overall structure, different ways it can be deployed, specific deployment instructions, recommended best practices, and potential challenges you might face during. In addition to handling typical events, the PDN needs to be able to recover as quickly as possible with minimal outage and minimum energy supply disruptions during disaster events, specifically the increasing growth of electrical load and the expansion of the network have made the control and. Mission-critical communications systems from Hitachi Energy are ready for the challenges of tomorrow, providing robust, secure and reliable communications

that are with you for the life of your network. You're committed to providing reliable, safe energy with minimal disruption. With DA communications leveraging intelligent connectivity from Itron, you can plan and operate.

## High-temperature resistant distribution network automation for em



Firstly, a comprehensive importance evaluation index is constructed for communication failures to determine the order of communication restoration in the failure area. Then the emergency ...



Help choose the right school for a move or get contact info for all high schools in Riverside, CA.



In recent years, the increasing frequency of extreme natural disasters has significantly exposed the vulnerability of distribution networks. To address this challenge, this study proposes a...



To solve this optimization problem, including the costs of energy not supplied regarding to both resiliency and reliability and protection switch costs, a binary imperial competitive algorithm ...



Abstract: Enhancing restoration capabilities of distribution systems is one of the main strategies for resilient power systems to cope with extreme events. However, most of the existing ...



Robust and resilient, our utility-grade intelligent network platform for distribution automation enhances reliability and efficiency by extending secure grid monitoring and control outside the substation fence.



high implies marked extension upward and is applied chiefly to things which rise from a base or foundation or are placed at a conspicuous height above a lower level.



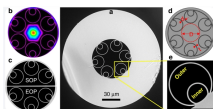
Definition of high adjective in Oxford Advanced American Dictionary. Meaning, pronunciation, picture, example sentences, grammar, usage notes, synonyms and more.



Mission-critical communications systems from Hitachi Energy are ready for the challenges of tomorrow, providing robust, secure and reliable communications that are with you for the life of your network.



high, tall, and lofty mean being above the usual level in height. high is used for things and not people, and it refers to distance from the ground or some other surface. A high fence surrounded the house. ...



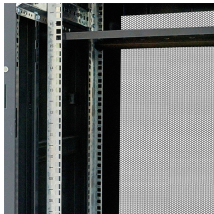
HIGH definition: having a great or considerable extent or reach upward or vertically; lofty; tall. See examples of high used in a sentence.



If something is high, it is a long way above the ground, above sea level, or above a person or thing. I looked down from the high window. The bridge was high, jacked up on wooden piers. The sun was ...



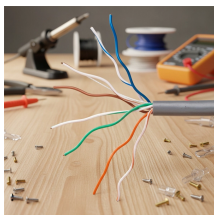
High (adjective, informal): Intoxicated by drugs or alcohol. The word "high" is a versatile term with multiple meanings and applications, spanning physical elevation, emotional states, and ...



This research provides theoretical support and technical guidance for optimizing the operation of distribution networks under different temperature conditions, while also highlighting the key influence ...



It's two and a half metres high and one metre wide. The corn grew waist-high (= as high as a person's waist) in the fields. high The garden is surrounded by a high wall. tall Mount Everest is the world's ...



To this end, this paper provides a comprehensive exploration of the technological solutions and strategies necessary to build and maintain resilient communications networks that can withstand and ...



This paper proposes a distributed temperature monitoring network using ZigBee and 4G/5G protocols. The network consists of temperature monitoring terminals, coordinators, and a ...



These features enable Distribution Automation (DA) operations by coordinating field devices, specialized software, and dedicated communication networks. This coordination allows the ...

## Contact Us

For more information, pricing, or custom solutions, please contact us:

Website: <https://www.indzawo.co.za>

Email: [sales@indzawo.co.za](mailto:sales@indzawo.co.za)

Phone: +27 71 296 8473

Address: 22 Quantum Street, Midrand, 1685, Gauteng, South Africa

This document is for informational purposes only. Specifications subject to change without notice.

