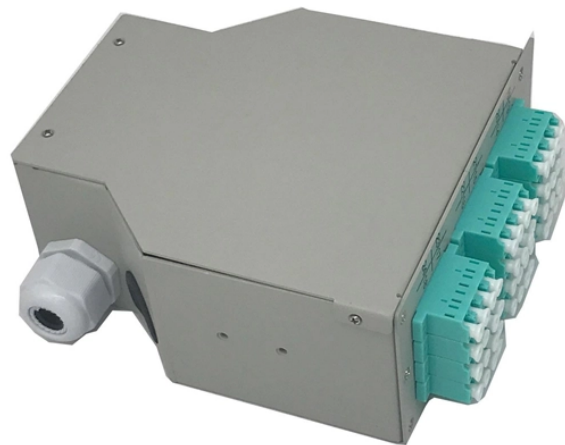


## High-density data center racks at Romanian offshore rates



### Overview

While a standard rack uses 7-10 kW, an AI-capable rack can demand 30 kW to over 100 kW, with an average of 60 kW+ in dedicated AI facilities. This article provides a condensed analysis of these costs, key efficiency metrics, and optimization strategies. As data centers evolve, configurations with. Market Forecast By Form Factor (1U, 2U, 4U), By Data Center Type (Mid-Sized, Enterprise, Large Data Centers), By Tier Type (Tier 1, Tier 2, Tier 3, Tier 4), By Services (Design and Consulting, Installation and Deployment, Support and Maintenance), By Industry (Banking, Financial Services and. Romania Data Center market size in 2026 is estimated at 93. 34 MW, growing from 2025 value of 77. Click on a market below, to explore its data center locations. The surge in power density to 100+ kW per rack in data centers is both an evolution and a revolution in the industry, signifying a shift in how we approach computing infrastructure, power management, and cooling technologies. This change reflects the industry's response to the growing demands of.

## High-density data center racks at Romanian offshore rates



This change reflects the industry's response to the growing demands of artificial intelligence (AI) and high-performance computing (HPC). In this article, we explore the evolution and ...



Data centers built five years ago struggle to cool 10kW per rack. Today's AI workloads require a minimum of 40kW, with next-generation deployments aiming for 250kW. The gap between ...



The data center market in Romania has been growing at a minimal rate, influenced by factors such as increasing demand for servers, storage, and network infrastructure, along with the...



Demand for high-density rack servers that offer enhanced processing power, storage capacity, and energy efficiency is rising as organizations in Romania seek to optimize performance, streamline ...



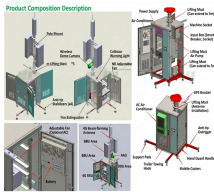
We currently have 63 data centers listed, from 13 markets in Romania (Romania). Click on a market below, to explore its data center locations. Save the trouble of contacting the providers yourself, ...



The Romania Data Center market centers on Bucharest, which claimed 58.47% share in 2025 through formidable connectivity, mature enterprise clusters, and government proximity.



This table shows how rack density, PUE, and location dramatically impact annual costs. An AI-capable 60 kW rack in a high-cost state could exceed \$200,000 annually, underscoring the ...



The combination of lower available capacity across Europe, as well as higher build and operational costs, makes it almost inevitable for providers to increase rental rates at colocation data centres in ...



Rising Rack Densities: A Driver for High-Density Rack Power Distribution Units The average power density of data center racks continues to rise to support AI and ML, crossing 10kW in 20231.



Covers data center buildings for top cloud/colocation data center (DC) operators. Includes DC locations, size in square feet, IT load in kilowatts (kW), new data center construction plans, ...

## Contact Us

For more information, pricing, or custom solutions, please contact us:

Website: <https://www.indzawo.co.za>

Email: [sales@indzawo.co.za](mailto:sales@indzawo.co.za)

Phone: +27 71 296 8473

Address: 22 Quantum Street, Midrand, 1685, Gauteng, South Africa

This document is for informational purposes only. Specifications subject to change without notice.

