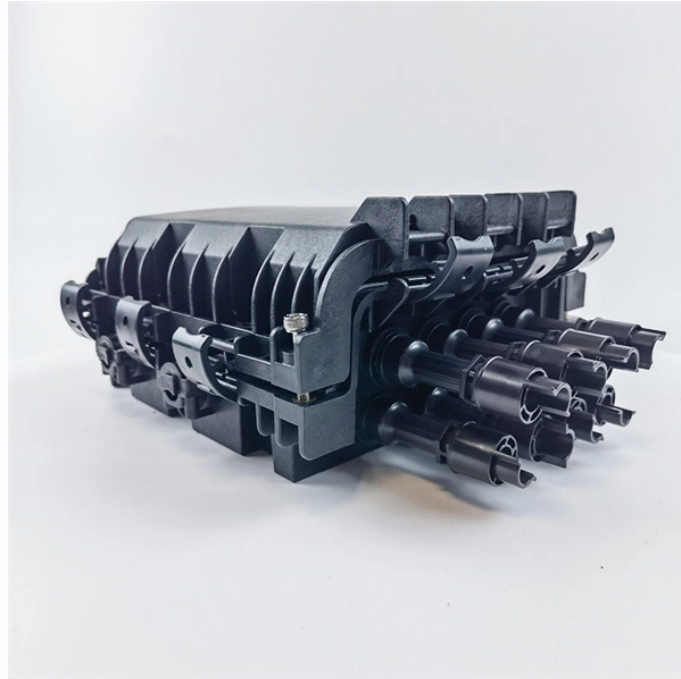


High Reliability Technology for Core Switches



Overview

If you're looking for the best enterprise core switches for 2026, I recommend considering options like the Cisco Catalyst 9300L with PoE+, the Cisco C9500-16X-A with dual PSUs, the M4300-12X12F managed switch, NETGEAR's 48-port managed switch, the Edge-Core 5610-52X, T-Plink's. If you're looking for the best enterprise core switches for 2026, I recommend considering options like the Cisco Catalyst 9300L with PoE+, the Cisco C9500-16X-A with dual PSUs, the M4300-12X12F managed switch, NETGEAR's 48-port managed switch, the Edge-Core 5610-52X, T-Plink's. A Core Switch is a critical device that operates in the backbone portion of a network, primarily used for high-speed data switching. It is part of the commonly used Network Switch hardware architecture and serves as a port device in the core layer. Securely connect everyone and everything, everywhere, every time. See how you can use artificial intelligence (AI) to. As AI computing scales to tens of thousands of GPUs, the most pressing issue in data centers has shifted from “not computing fast enough” to “not dissipating heat fast enough.” As the core network connecting all computing resources, the cooling capability of switches directly determines the. In this tech paper, you will learn about the key

protocols for building a redundant network and discover—based on five examples—how to design highly available three-tier or two-tier networks using LANCOM products. By connecting a switch to two. An ultra-compact, palm-sized AI productivity tool designed to handle inference for 200B parameter models and complex AI development right from your desktop.

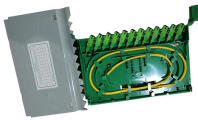
High Reliability Technology for Core Switches



Cisco Catalyst and Meraki Campus LAN core and distribution switches are scalable, secure network switches with exceptional intelligence.



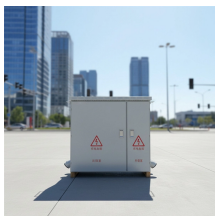
Building on its S9827 series 800G switch platform, which already incorporates liquid cooling design and has been validated through large-scale deployments, H3C has refined liquid ...



Experience high-performance core networking with Aruba CX, featuring AI-driven automation, integrated security, and scalable architecture.



The CE12800 uses industry-leading CSS technology, which can virtualize a maximum of four physical switches into one logical switch to better facilitate network management and improve overall reliability.



FSP offers diverse power solutions for Core Network High-end Fiber Switch Application and Network Core Security, with customized services to meet your needs. Please contact us for further discussion.



In this tech paper, you will learn about the key protocols for building a redundant network and discover—based on five examples—how to design highly available three-tier or two-tier networks ...



The high reliability and redundancy design of Core Switches, including redundant power supplies, redundant interfaces, link aggregation, and hot-swap capabilities, ensures network ...



Looking for a reliable core switch that delivers high-speed performance and robust reliability? The Cisco C9500-16X-A Catalyst 9500 offers 16 10Gb SFP+ ports, perfect for enterprise ...



Built to support high-performance applications, our managed switches empower IT administrators to fine-tune network traffic, enhance security, and scale effortlessly—all while ensuring unmatched ...

Contact Us

For more information, pricing, or custom solutions, please contact us:

Website: <https://www.indzawo.co.za>

Email: sales@indzawo.co.za

Phone: +27 71 296 8473

Address: 22 Quantum Street, Midrand, 1685, Gauteng, South Africa

This document is for informational purposes only. Specifications subject to change without notice.

