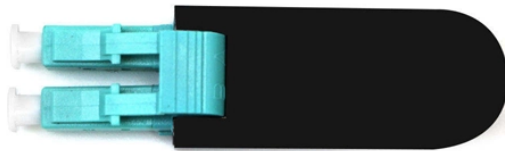


Height of low-voltage switchgear busbar



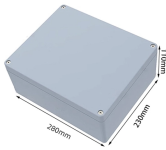
Overview

Select the busbar Material (Copper or Aluminum). Click Calculate to see the required area and recommended size. Check the Perform Full IEC Verification. Busbars are the backbone of switchboards, distribution boards, and electrical panels. They carry large currents and must be properly sized to ensure safety, performance, and compliance. The IEC standard for busbar sizing provides detailed guidelines to help engineers select appropriate busbar. IEC 61439 is a standard developed by the International Electrotechnical Commission (IEC) that covers design verification for low-voltage electrical products and assemblies.

Height of low-voltage switchgear busbar



Learn how low voltage switchgear design balances busbar current rating, cabinet space, heat management, and modular construction for U.S. and European projects. This guide explains ...



These standards specify the parameters that should be considered when sizing busbars, including current rating, short-circuit withstand capacity, temperature rise, insulation, and ...



A busbar is a metallic bar or strip—typically copper or aluminum—mounted inside switchgear/switchboards to distribute high currents. ...



This chart provides recommended busbar sizes for common continuous current ratings. The configurations shown are verified to pass typical IEC and NEC checks for thermal and short-circuit ...



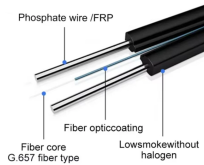
A busbar is a metallic bar or strip—typically copper or aluminum—mounted inside switchgear/switchboards to distribute high currents. Flat profiles maximize surface area for cooling ...



The IEC 61439 standard applies to busbar assemblies that will be installed in electrical applications with a voltage rating up to 1000 V (for AC) and 1500 V (for DC).



The use of busbar for switchgear goes back to the dawn of electricity generation and is very common in both residential load centers of 200A and less and in industrial motor control center (MCC) ...



Standards such as IEC 61439 for “low-voltage switchgear and controlgear assemblies” define allowable temperature rise limits for bus bar systems. The said limits can be referred to from ...



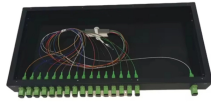
Switchgear Busbar Design switchgear busbar sizing busbar current rating temperature rise switchgear short time withstand IEC 62271 IEC 61439 IEC 60076 Power distribution FAQ What ...



Our busbar systems for electrical installations offer a particularly easy way of fitting distribution systems with electrotechnical components. The modular design saves space, while quick assembly contacts ...



Busbar design in switchgear ensures safe, reliable power distribution by balancing current capacity, thermal performance, mechanical strength, insulation, and standards compliance.



Busbar design in switchgear ensures safe, reliable power distribution by balancing current capacity, thermal performance, ...

Contact Us

For more information, pricing, or custom solutions, please contact us:

Website: <https://www.indzawo.co.za>

Email: sales@indzawo.co.za

Phone: +27 71 296 8473

Address: 22 Quantum Street, Midrand, 1685, Gauteng, South Africa

This document is for informational purposes only. Specifications subject to change without notice.

