

Grounding measures for outdoor distribution boxes



Overview

26 mm² (10 AWG) ground wire must be used, and in all other markets a 6 mm² must be used. On the US market, a 5. Whether you're a seasoned pro or just starting out, this comprehensive guide will give you practical insights into proper grounding techniques, with a special focus on how selecting quality materials from a reliable building material supplier impacts your entire system's safety and longevity. Transformer and Base-Frame Grounding Both the transformer's support. IPMENT, STRUCTURES, ETC. IN ELECTRICAL STATIONS INCLUDING TRANSMISSION AND DISTRIBUTION SUBSTAT GR THAN 8 FT FROM THE FENCE. THE FENCE SHALL BE GROUNDED SEPARATELY FROM THE GRID UNLESS OTHERWISE NOTED ON THE A PROPRIATE PROJECT DRAWING. SEE APPLICATION. When inspecting the interior of a stainless steel outdoor electrical box distribution box, pay attention to the copper or tin-plated terminals on the base plate or side walls. These locations are usually marked with grounding symbols for easy cable crimping. Each DISTRIBUTION BOX and controller must be grounded. 7 meters) high makes it easily accessible without the need to bend or stretch excessively.

Grounding measures for outdoor distribution boxes



By following these measures—controlling resistance, ensuring adequate burial depth, bonding all metallic parts, protecting against corrosion, and providing solid joints—you will achieve a safe, ...



Clamp on the meter to the ground conductor and measure the ground current. Note that if ground current is above 5 Amp or noise exceeds 50 V, grounding resistance measurements shall not be ...



Each Power Circuit Breaker or Power Transformer having a bushing Voltage Transformer on the tank shall have the Voltage Transformer provided with a separate ground lead, independent of the ...



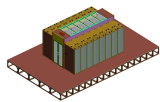
General Guidelines for the Installation of Distribution Box Standard Height Recommendations Follow height rules when installing a distribution box. Wall-mounted boxes should be 4.5 to 5.5 feet high. ...



One of the most effective ways to protect outdoor electrical systems is through proper grounding. This article explores how grounding prevents electrical damage in outdoor spaces, why it ...



When inspecting the interior of a stainless steel outdoor electrical box distribution box, pay attention to the copper or tin-plated terminals on the base plate or side walls. These locations are usually marked ...



Each DISTRIBUTION BOX and controller must be grounded. On the US market, a 5.26 mm² (10 AWG) ground wire must be used, and in all other markets a 6 mm² must be used.



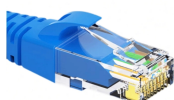
If it will, you must either re-design your project to allow it to be built safely given the pre-existing power line location, or make arrangements with FPL to either deenergize and ground our facilities, or ...



These instructions define the areas in which assistance may be given to a primary customer to coordinate the customer's and DTE Electric systems, to increase the operating safety of high voltage ...



This specification guide provides system designers, electrical engineers, and procurement professionals with the technical criteria needed to select compliant outdoor electrical ...



Whether you're a seasoned pro or just starting out, this comprehensive guide will give you practical insights into proper grounding techniques, with a special focus on how selecting quality materials ...

Contact Us

For more information, pricing, or custom solutions, please contact us:

Website: <https://www.indzawo.co.za>

Email: sales@indzawo.co.za

Phone: +27 71 296 8473

Address: 22 Quantum Street, Midrand, 1685, Gauteng, South Africa

This document is for informational purposes only. Specifications subject to change without notice.

