

Grounding Requirements for Park Distribution Boxes

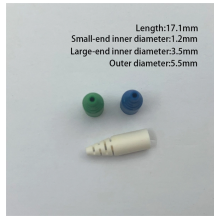


Overview

Grounding conductor sizes shall comply with NEC Table 250. This shall apply to all circuits rated 100 volts or more above ground potential. A temporary power distribution box (TPDB), often called a spider box, functions as a portable electrical hub that centralizes and protects power distribution on a job site. This device safely takes power from a single source, such as a generator or temporary utility service, and divides it into. Power from factory ground must be installed by a qualified electrician. 26 mm² (10 AWG) ground wire must be used, and in all other markets a 6 mm² must be used. Electrical systems, conductors, and equipment installed on or used in conjunction with amusement attractions shall comply with: (1) The National Electrical Code, National Fire Protection Association 70 in effect at the time of the manufacture of the amusement attraction; or (2) At a minimum, the. If you're working with electrical systems, you know that grounding isn't just some bureaucratic requirement—it's literally the difference between a safe, functional system and a potential disaster. The neutral conductor is typically the grounded conductor connected to the system's neutral point, carrying current under normal operation. 2 Clamps and continuity devices shall be non-ferrous

material, UL approved.

Grounding Requirements for Park Distribution Boxes



When our thoughts drift away, grounding techniques can redirect our focus back to the present, centering us in our body and surroundings. This shift can interrupt the stress response and ...



Whether you're a seasoned pro or just starting out, this comprehensive guide will give you practical insights into proper grounding techniques, with a special focus on how selecting quality ...



In this comprehensive guide, we'll explore the science of grounding, its physiological effects, health benefits, who should do it, and multiple options for how to incorporate it into your daily ...



itions pertaining to Article 250. Understanding the difference between bonding and grounding will help you correctly apply the provisions of this article. Because of the massive size and scope of Article ...



After a trauma, it's normal to experience flashbacks, anxiety, and other uncomfortable symptoms. Grounding techniques help control these symptoms by turning attention away from thoughts, ...



Each DISTRIBUTION BOX and controller must be grounded. On the US market, a 5.26 mm² (10 AWG) ground wire must be used, and in all other markets a 6 mm² must be used.



Securely manage job site power. Build a compliant temporary distribution box, detailing component sizing, critical grounding, and wiring integrity.



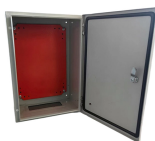
They have very easy and inexpensive 30amp Outdoor boxes that are simply for the outlet itself. You can run this from your Cabin's Main Panel, via a 30amp 120v breaker, rather than the ...



Grounding, also called earthing, is a technique that involves doing activities that “ground” or electrically reconnect you to the earth.



Grounding, or Earthing (you can use these terms interchangeably), is connecting with and absorbing the Earth's natural energy, or electron flow.



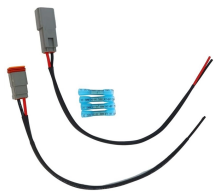
Complete specification guide for outdoor electrical distribution boxes covering NEC Article 312 requirements, NEMA ratings, sizing calculations, and selection criteria for commercial and ...



The following installation and inspection guidelines have been developed as part of the Mobilehome Park Utility Upgrade Program (Program). These utility installations must be completed in accordance ...



(3) The neutral and equipment safety grounding conductors shall be continuous and separate throughout the entire system. (4) Separate steel tracks or steel framework, such as roller coaster ...



3.11 Where metal covers on pull boxes and junction boxes are used, they shall comply with the grounding and bonding requirements of NEC Article 250.



Grounding is a way to distract yourself from what's going on inside you — your thoughts and feelings — and focus on what's going on around you. Grounding helps you feel present in the moment rather ...



Grounding techniques that focus on sight, sound, taste and touch can help you find the calm you need when you feel overwhelmed.



Grounding electrode conductors must be connected at accessible points from the load end of service conductors, with specific rules for outdoor transformers and dual-fed services.



Discover what grounding yourself is and how it may boost immunity, reduce stress, and improve sleep. Explore simple ways to connect with the earth.



What Is Grounding? Grounding, also known as earthing, is when you stand on the earth or have contact with a product that's grounded into the earth.



4 - FEEL: Pay attention to your body and think of 4 things that you can feel, and say them out loud. For example, you could say, I feel my feet warm in my socks, I feel the hair on the back of my neck, or I ...

Contact Us

For more information, pricing, or custom solutions, please contact us:

Website: <https://www.indzawo.co.za>

Email: sales@indzawo.co.za

Phone: +27 71 296 8473

Address: 22 Quantum Street, Midrand, 1685, Gauteng, South Africa

This document is for informational purposes only. Specifications subject to change without notice.

