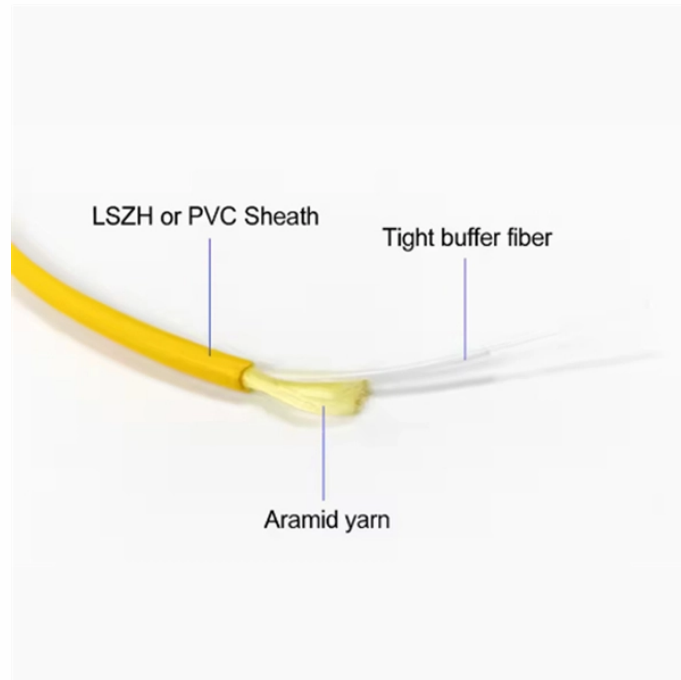


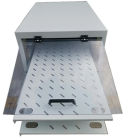
FLXm distribution box specifications



Overview

The FLX™ ODN FDC supports up to 6 distribution cable runs in 6 directions using drop ports. It supports up to 1920 Home Pass from a single FLX™ ODN FDC. This publication contains the following new or updated information. 81 ft)] for standard cable lengths. 10. AZE's Outdoor Fiber Optic Distribution Box is applicable in FTTH project and suitable for building's outer walls application; They can distribute cables after installing splitters and also can draw out room fiber optic cables by direct or cross-connections. This eliminates field splicing for faster deployment, improves time to market, and simplifies planning and O&M activities. With the maximum carrying capacity of 6000W, it can be applied to high mast lighting system combined with outdoor lighting fixtures such.

Flxm distribution box specifications



AZE's Outdoor Fiber Optic Distribution Box is applicable in FTTH project and suitable for building's outer walls application; They can distribute cables after installing splitters and also can draw out room fiber ...



It describes the components and features of FDBs, including their waterproof design, fiber management capabilities, splitter installation options, and environmental specifications.



When ordering, users must specify the number of circuits in the distribution box, the corresponding current of each circuit, as well as the number of poles and wiring of the circuit breakers;



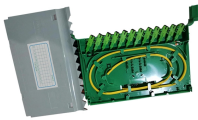
AZE's Outdoor Fiber Optic Distribution Box is applicable in FTTH project and ...



DC Micro Style Distribution Boxes Four-pin, One Signal per Port Cable Connector Distribution Box Eight-port DC Micro Distribution Box Specifications



Distribution Box Metal Distribution Box Features
Continuously welded seams Foam-in-place
seamless gasket 120-degree opening heavy-duty
industrial hinges IP66 protection rating against
dust and ...



It performs well in wet locations with the water-
proof rating of IP66. With the maximum carrying
capacity of 6000W, it can be applied to high mast
lighting system combined with outdoor lighting
fixtures such ...



lastic Distribution Box 1 Overview With full-plastic
shell, AXM series distribution box is used to
accommodate neutral terminal block, earthing
terminal block and DIN rail, and can work ...



It supports up to 1920 Home Pass from a single
FLX™ ODN FDC. It supports cable diameters from
3 mm to 15 mm for input trunk cables and
distribution cables. These enclosures are designed
for ...



The distribution box is used as a termination point
for the feeder cable to connect with drop cable in
FTTx communication network system. The fiber
fixing, splitting, splicing and jumper can be done in
...



Explore the details, specifications and video of our
Outdoor Water-proof FTTH Distribution Terminal
Box, and order high-quality Outdoor Water-proof
FTTH Distribution Terminal Box from our factory
directly ...

Contact Us

For more information, pricing, or custom solutions, please contact us:

Website: <https://www.indzawo.co.za>

Email: sales@indzawo.co.za

Phone: +27 71 296 8473

Address: 22 Quantum Street, Midrand, 1685, Gauteng, South Africa

This document is for informational purposes only. Specifications subject to change without notice.

