


## First generation FC interface





### Overview

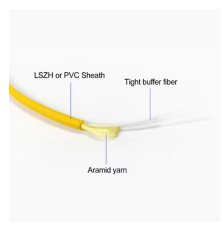
The 1st Generation Brocade Fibre Channel switches (1 Gbps) were introduced in the late 1990s and laid the foundation for SAN environments. 8 ports — primarily used for small SANs. Fibre Channel (FC) is a high-speed data transfer protocol providing in-order, lossless delivery of raw block data. " A brief history of interoperability Standards, Conformance, and Interoperability FCIA. Two years later IBM, Hewlett-Packard Co. Like any interface in Cisco NX-OS, vFC interfaces are manipulable objects with properties such as configuration and state. These standards specify the following: Other technical work deemed necessary for the Fibre Channel industry.


## First generation FC interface

	<p>Fibre Channel started in 1988, with ANSI standard approval in 1994, to merge the benefits of multiple physical layer implementations, including SCSI, HIPPI and ESCON. Fibre Channel was designed as ...</p>
---	---

	<p>A physical Fibre Channel interface can be configured as an E port or an F port, an F port, or an SD port. Interfaces may also be configured in Auto mode; the port type is determined during interface ...</p>
---	---

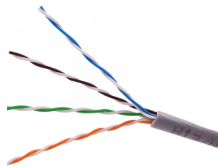
	<p>SONET/SDH The multiplexing hierarchy is the only fundamental difference between SONET and SDH SDH first level (STM-1) is 155 Mbit/s, while SONET first level (OC-1) is 51.8 Mbit/s</p>
---	---

	<p>The INCITS/Fibre Channel Technical Committee is responsible for the development of the Fibre Channel (FC) standards. These standards specify the following: Other technical work deemed ...</p>
---	--

	<p>Fibre Channel has revolutionised the way network storage is organised. When first introduced, it operated at speeds no faster than SCSI-3, which meant that its real value in Storage Area Networks ...</p>
---	--



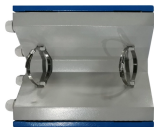
Fibre Channel offers point-to-point, switched and loop interfaces to deliver lossless, in-order, raw block data. Because Fibre Channel is many times faster than SCSI, it has replaced that ...



FC Protocol for SCSI Defines ULP Mapping to Send SCSI Information Defines Data Information Units  
FCP\_CMND (unsolicited command) FCP\_XFER\_RDY (data descriptor) FCP\_DATA (solicited data)



NVMe has been developed by an industry consortium, the NVM Express Workgroup. Version 1.0 of the interface specification was released on March 1, 2011 and continued to evolve into version 1.4 which ...



The intention of the Fibre Channel (FC) is to develop practical, inexpensive, yet expendable means of quickly transferring data between workstations, mainframes, supercomputers, desktop computers, ...



The FC connector is often regarded as one of the first widely adopted fiber-optic connectors. With a threaded metal housing, the FC provided stable, ...



The 1st Generation Brocade Fibre Channel switches (1 Gbps) were introduced in the late 1990s and laid the foundation for SAN environments. Here's a list of the key models from that era:



FC components include initiators, targets, and FC-capable switches that interconnect FC devices and may also interconnect FC devices with Fibre Channel over Ethernet (FCoE) devices.

## Contact Us

For more information, pricing, or custom solutions, please contact us:

Website: <https://www.indzawo.co.za>

Email: [sales@indzawo.co.za](mailto:sales@indzawo.co.za)

Phone: +27 71 296 8473

Address: 22 Quantum Street, Midrand, 1685, Gauteng, South Africa

This document is for informational purposes only. Specifications subject to change without notice.

