

Firewall Core Switch Network IP Planning



Overview

A complete guide to enterprise network infrastructure—covering DMZ, firewalls, core networks, and hybrid cloud integration. Includes best practices, CLI examples, and design tables for IT professionals. A misstep here can either cripple network performance with unnecessary. In cases where there's a HA firewall setup, I believed that, instead of introducing another switch between the ISP and the firewall cluster, it makes sense to connect the ISP directly to the core switch and then back to both firewalls using unrouted L2 VLAN. I'd love to hear your thoughts and. The Core is doing L3 routing for four VFR's. Other VFR's are routed on the Firewall. How would you configure the connection between Core and Firewall?

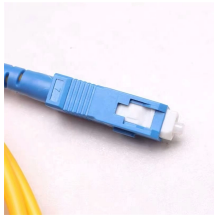
Currently we have a transit network (VLAN 100, 192. Instead of. With the Fortinet solution for integrated networking using FortiLink, the core layer always comprises a set of two to four FortiGate devices and two very high-speed FortiSwitch units, which support a large number of 100-GbE and/or 40-GbE ports with enough capacity to grow the links between them and. This document is based on Eudemon200E-N&Eudemon1000E-N&Eudemon8000E-X

V500R005C00 and can be used as a reference for Eudemon200E-N&Eudemon1000E-N&Eudemon8000E-X V500R005C00, Eudemon200E-G&Eudemon1000E-G V600R006C00, and later versions. We will probably need more info.

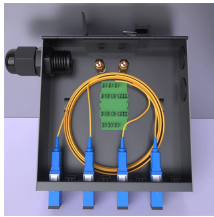
Firewall Core Switch Network IP Planning



This guide provides instructions on how to plan and deploy the core components required for a fully functioning network and a new Active Directory domain in a new forest with Windows ...



Firewall definition: What is a network firewall? A firewall is a network security device designed to monitor, filter, and control incoming and outgoing network traffic based on predetermined security rules.



A complete guide to enterprise network infrastructure—covering DMZ, firewalls, core networks, and hybrid cloud integration. Includes best practices, CLI examples, and design tables for ...



The firewall learns the addresses of intranet servers and terminal IP addresses from the core network side device and advertises the routes of the servers to the Internet side device.



My colleague argued that internet connections should not be terminated on the core switches or internal access switches but rather directly on the firewall or using dedicated external WAN switches.



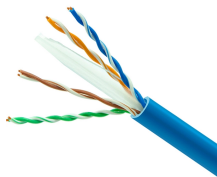
A firewall is a network security device that separates a trusted internal network from an external network deemed untrustworthy, such as the internet. It regulates incoming and outgoing network traffic based ...



Firewalls protect networks by monitoring and controlling traffic based on defined rules. Learn what a firewall is, how it works, and explore key types.



A firewall is a network security solution that monitors and regulates traffic based on defined security rules and accepts, rejects or drops traffic accordingly.



A Firewall is a network security device that monitors and filters incoming and outgoing network traffic based on an organization's previously established security policies. At its most basic, a firewall is ...



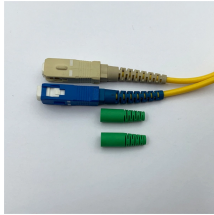
we have more than 15 vlans that are configured on our FW and we are planning to switch the vlans and their permissions (ACL and Natting) from FW to Core switch.



A firewall inspects all incoming and outgoing traffic and decide whether to allow or block it. All data packets entering or leaving the network must first pass through the firewall.



The decision on using IP routing and VRF routing in the core switch is a design choice that can provide performance advantages on inter VLAN routing within each VRF and the GRT.



With the use of a core layer, each aggregation switch only needs 2x100-GbE links, and the core layer is the only place where you need large numbers of 100-GbE ports.



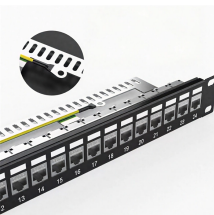
A firewall is a network security device that prevents unauthorized access to a network by inspecting incoming and outgoing traffic using a set of predetermined security rules.



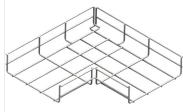
Firewall (computing) In computing, a firewall is a network security system that monitors and controls incoming and outgoing network traffic based on configurable security rules. A firewall typically ...



Detailed look at the Best Network Firewall Security Tools with reviews. Includes Key Features, Pros & Cons, and links to free trials.



Learn how routers and Layer 3 switches connect networks, route IP packets, and enable fast inter-VLAN communication in modern network designs.



You can use the Windows Security app to view and manage the status of Windows Firewall. You can turn the firewall on or off, and access advanced settings for different network types, including domain ...



Learn when to use core switch routing vs next-generation firewall routing in enterprise networks. Explore performance, security zones, VRF design, and hardware platform selection.



Firewall security policies, VLAN assignments and IP network addressing must be carefully designed and configured so that the necessary isolation exists between DMZ segments, internal ...

Contact Us

For more information, pricing, or custom solutions, please contact us:

Website: <https://www.indzawo.co.za>

Email: sales@indzawo.co.za

Phone: +27 71 296 8473

Address: 22 Quantum Street, Midrand, 1685, Gauteng, South Africa

This document is for informational purposes only. Specifications subject to change without notice.

