

Fireproof putty dosage for cable trays



Fireproof putty dosage for cable trays



When applied to outlet boxes, SpecSeal SSP Putty works smoothly into voids, gaps, and seams, forming a continuous, code-compliant barrier that helps prevent the spread of fire, smoke, and ...



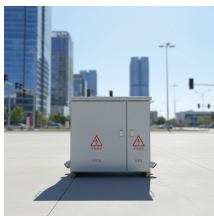
Charts are provided to determine the number of pillows needed for various cable tray sizes and opening configurations, along with two sticks of moldable putty (FSP-MPS) per opening.



FM011 Moldable Firestop Putty is an industry leading, one-part, flexible, intumescent putty ready-to-use for wall or floor openings containing cable trays, cable bundles, plastic pipes ...



3MTM Fire Barrier Putty Sleeve Kits are ideal for existing through-penetration openings with cables, future cable installations (blank openings*) or new construction through-penetration openings for ...



Cable tray installation must comply with specific technical standards to ensure electrical safety, system reliability, and long-term maintainability. This document ...



NS Fire® Putty is a solvent free putty for fire barriers up to 4 hours. It is designed as a joint filler and sealer for use in penetration seals. Tested to EN1366-3 on C1, C2 and D1 Type Cables, Cable Trays ...



Product Introduction Description: FM011 Moldable Firestop Putty is a one-part, moldable, elastomeric firestop material which is intumescent to stop the spread of flame, noxious gas and smoke. FM011 is ...



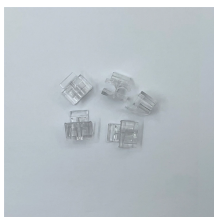
Fitting Putty Pads will reinstate the fire rating of the partition for up to 90 minutes (depending on the partition fire rating) preventing the passage of smoke, flames, sound and air through the electrical ...



3M Fire Barrier Moldable Putty+ is a one-part, halogen-free product designed to firestop electrical outlet boxes and a wide variety of through-penetrations including cable, conduit, insulated pipe and metal ...



Helps to improve the firestop performance for wide range of applications - large openings, cable trays, telecom cables Quick and simple to install - applied by hand and no tools required



Cable tray installation must comply with specific technical standards to ensure electrical safety, system reliability, and long-term maintainability. This document outlines the key requirements for cable tray ...

Contact Us

For more information, pricing, or custom solutions, please contact us:

Website: <https://www.indzawo.co.za>

Email: sales@indzawo.co.za

Phone: +27 71 296 8473

Address: 22 Quantum Street, Midrand, 1685, Gauteng, South Africa

This document is for informational purposes only. Specifications subject to change without notice.

