
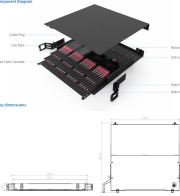



Fiber distribution box with thick black wire





Fiber distribution box with thick black wire

 <p>SD-WAN module power connector</p> <p>NEW</p> <p>RoHS Compliant Lead-Free REACH Compliant</p> <p>Product Features • 12VDC Input • 5VDC Output</p> <p>Product Dimensions • 100mm x 50mm x 15mm</p>	<p>CommScope wall boxes offer efficient fiber connectivity. Easy installation, versatile sizes, and superior cable management.</p>
---	--

 <p>Component Diagram</p> <p>Labels: Cable Tray, Cable, Patch Panel, Fiber Optic Distribution Box, Heat Shrinkable Closure, Fiber Optic Joint Box, Polycarbonate Housing, 8 Ports, Indoor Mini FTTH, Space-Saving</p>	<p>144FO Heat Shrinkable Closure Fiber Optic Joint Box Polycarbonate Housing 8 Ports Indoor Mini FTTH Fiber Optic Distribution Box Space-Saving Fiber ...</p>
--	---

	<p>Fiber optic junction/patch box, available empty (front plate sold separately) For wall mounting Allows easy access to patch cables and pigtails after opening the hinged cassette tray; single door with a ...</p>
---	---

	<p>The Fiber Optic Terminal Box is an essential component used as a ...</p>
---	---

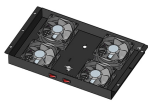
	<p>OTRANS manufactures cable distribution products for network wire management, includes optical fiber distribution frame, rack mount fiber optic patch panel, wall mount fiber patch panel, fiber cable copper ...</p>
---	---



This wall mount fiber demarcation/distribution box is a rugged, low cost, low profile interconnection between central office and multi-dwelling units of FTTx application.



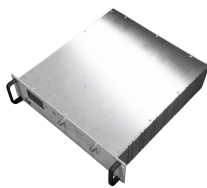
6-Core FTTH Fiber Distribution Termination Box with 6 SC APC Adapters, IP65 Waterproof, Wall-Mount Enclosure for Residential/Commercial Fiber Optic Splicing & Management (with 6 APC Adapter)



FDP420F is a subscriber optical fiber access box that is used to build at the first layer in the FTTH networks. It is designed for in-line application to provide a protected access point between the feeder ...




The Fiber Optic Terminal Box is an essential component used as a termination point for the feeder cable to connect with drop cables in FTTx communication network systems.




Get up to 24 fibers in one cassette. Make 108 high-density LC fiber connections in only 1U. Protect your fiber terminations in damp environments. Make easy, snap-in fiber connections. ITEM# JPM390A, ...



FDP420F is a subscriber optical fiber access box that is used to build at the first layer in the FTTH networks. It is designed for in-line application to provide a protected ...

<p>An Extensive Library of Self-Developed Products</p>  <p>Optical Distribution Frame Rack-Mounted Fiber Patch Panel Sound Network Cabinet</p> <p>Fiber Optic Distribution Box Fiber Adapters Copper Cable Patch Panel Fiber Patch Cords</p>	<p>Indoor Wall Mounted Fiber Optic Distribution Box (96 Couplers Maximum) - Black PP-F1505-BK Add to cart Quick view Indoor 4-Port Metal Fiber Optic Wall Mount Terminal Box - Black PP-F1512-BK Add ...</p>
--	--

	<p>144FO Heat Shrinkable Closure Fiber Optic Joint Box Polycarbonate Housing 8 Ports Indoor Mini FTTH Fiber Optic Distribution Box Space-Saving Fiber Distribution Hub: 4x LC Ports, 8 Splices, Micro ...</p>
---	---

Contact Us

For more information, pricing, or custom solutions, please contact us:

Website: <https://www.indzawo.co.za>

Email: sales@indzawo.co.za

Phone: +27 71 296 8473

Address: 22 Quantum Street, Midrand, 1685, Gauteng, South Africa

This document is for informational purposes only. Specifications subject to change without notice.

