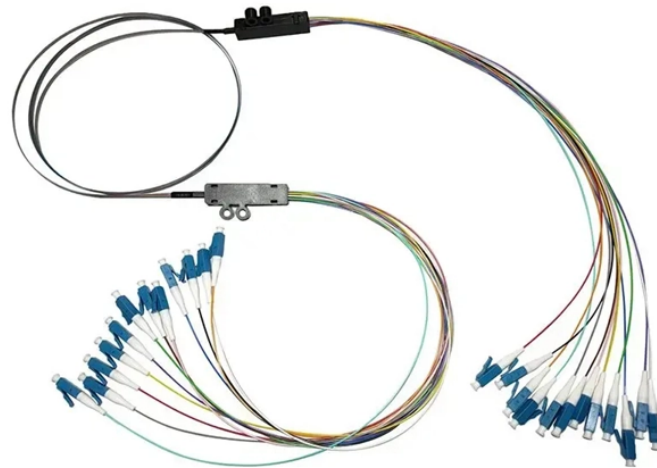


## Fiber Optic Five-Hole Socket Panel



### Overview

It provide mechanical protection and managed fiber control in an attractive format. A variety of possible fiber termination techniques are accommodated. This FTTH Faceplate Fiber Socket Panel SC LC FC is used for FTTH splicing and termination, between indoor SC LC FC fiber. Check each product page for other buying options. QIANRENON LC Fiber Panel Mount Adapter LC Fiber Optic Connector Socket LC Fiber Coupler Module. XLR Panel/D-Panel Mount, for Fibre Optic Network LAN Integrated Cabling Need help?

Consolidate your fiber optic connections in industrial environments with our DIN rail patch panel, with a modular design and tool-free installation save space and simplify deployment. Easy to install with push-cover design and supports custom logo printing.

## Fiber Optic Five-Hole Socket Panel



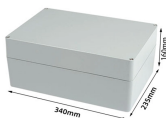
XLR Panel/D-Panel Mount, for Fibre Optic Network LAN Integrated Cabling. Need help?



The 2 port fiber outlet box is used as termination point to interconnect incoming cable with optical network unit device in FTTH, FTTB applications. It is typically installed inside the subscriber's home ...



Streamline your network termination with our premium Fiber Optic Wall Sockets and FTTH Outlets. Engineered for reliability and ease of use, these indoor optical faceplates provide secure fiber ...



Reserve space for future fiber optic needs with our blank fiber adapter panel. This panel snaps in for easy expansion and compliance with TIA/EIA-568-C.3 standards.



This FTTH Faceplate Fiber Socket Panel SC LC FC is used for FTTH splicing and termination, between indoor SC LC FC fiber optic cable and pigtails. Used for wall mounted or desktop applications. It is ...



welcome to taobao purchase type 86 super 5678 category 5-hole 678 gigabit computer fiber optic network cable socket panel, taobao digital network cable socket panel, taobao hundreds of millions ...



Discover high-quality fiber optic patch panels from Foss - designed for flexibility, scalability, and easy installation in data centers and communication networks.



Explore CommScope's efficient and scalable fiber splice panels designed for seamless connectivity. Accommodating LC, SC, and MTP/MPO connectors, these panels are ideal for data centers, ...



Engineered for seamless integration between indoor fiber optic cables and pigtails, this socket panel is compatible with SC, LC, and FC connectors. It is ideal for wall-mounted or desktop installation in ...



FS offers FHD® FAPs and FHU™ 1U fiber patch panel with LC, SC, MTP®/MPO connectors in singlemode/multimode fiber to deploy medium for high-density fiber optic network applications.

## Contact Us

For more information, pricing, or custom solutions, please contact us:

Website: <https://www.indzawo.co.za>

Email: [sales@indzawo.co.za](mailto:sales@indzawo.co.za)

Phone: +27 71 296 8473

Address: 22 Quantum Street, Midrand, 1685, Gauteng, South Africa

This document is for informational purposes only. Specifications subject to change without notice.

