

Fiber Optic Cable Marking Burial Depth



Overview

The short answer, based on general industry standards and the National Electrical Code (NEC), is that fiber optic cable is typically buried between 24 inches (60 cm) and 30 inches (76 cm) deep. However, simply hitting this depth isn't enough to guarantee your network survives. Factors like the depths are established based on principles of protecting cables from physical impact and dispersing adverse weather effects should they encounter water, frozen temps, etc. Shallower depths are permissible when individual lengths are placed within conduits. Here is a look at depths commonly found in. ble may extend of the reel and beco ssible safety hazard and/or damaging the cable. This comprehensive guide examines key factors influencing ideal burial.

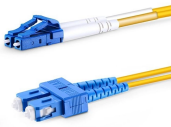
Fiber Optic Cable Marking Burial Depth



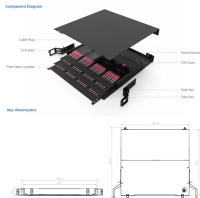
Direct buried fiber optic cable installation practices are essentially the same as those used for placing copper cable. The following methods of direct burial of fiber optic cables will be addressed: plowing ...



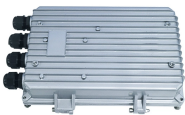
Typically, burial depths range from 0.3 to 1.5 meters, balancing protection with installation cost and accessibility. With fiber deployments accelerating in urban and rural areas, understanding ...



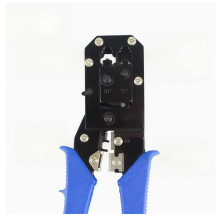
Discover how deep fiber optic cables should be buried to avoid damage, comply with regulations, and ensure long-term network performance.



Proper burial depth is critical for the safety, durability, and performance of your communication infrastructure. This guide provides a comprehensive overview of industry standards, best practices, ...



The question of how deep to bury fiber optic cable has no single answer, as the required depth changes significantly based on location, environment, and specific application.



Learn the recommended burial depth for underground fiber optic cable, including residential, roadway, and conduit installations, with practical field guidance.



Learn how deep fiber optic cable is buried, key factors affecting buried fiber optic cable depth, and best practice for underground optical fiber installation.



This comprehensive guide examines key factors influencing ideal burial depth, methods to determine your specific requirements, installation best practices, and how to keep networks ...



Personnel feeding cable into a feed-chute must make sure that they do not position themselves inside a cable loop. Hearing protection may be required by vehicle operators. Pre-ripping provides a safety ...



The short answer, based on general industry standards and the National Electrical Code (NEC), is that fiber optic cable is typically buried between 24 inches (60 cm) and 30 inches (76 cm) deep. However, ...



Proper burial depth is critical for the safety, durability, and performance of your communication infrastructure. This guide provides a comprehensive overview of ...

Contact Us

For more information, pricing, or custom solutions, please contact us:

Website: <https://www.indzawo.co.za>

Email: sales@indzawo.co.za

Phone: +27 71 296 8473

Address: 22 Quantum Street, Midrand, 1685, Gauteng, South Africa

This document is for informational purposes only. Specifications subject to change without notice.

