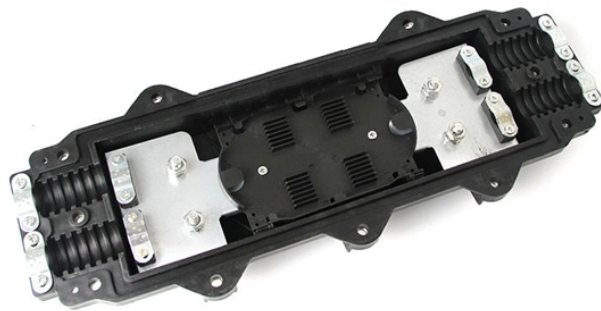
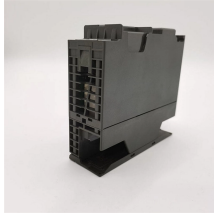


Fiber Optic Cable Junction Box Scenarios



Fiber Optic Cable Junction Box Scenarios



In conclusion, fiber optic junction boxes are indispensable components in modern communication networks. Whether you're ...



Cable Vault/Cable Racking Scheme Junction Box
Details 2 Fiber Optic Service Box Details Initial Box
Installation Details Plan (Conduit Position)
Directional Change Plan (Conduit Position) Straight
...



Learn everything about fiber termination boxes—types, installation steps, and maintenance tips to ensure reliable fiber optic network performance.



With the increasing digitization and requirement for high-speed networking, the Bartec Technor junction boxes for fiber optic signals performs dependably in the harshest of environments.



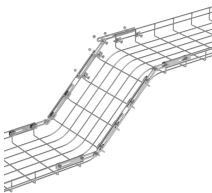
In conclusion, fiber optic junction boxes are indispensable components in modern communication networks. Whether you're setting up a home internet connection or managing a large ...



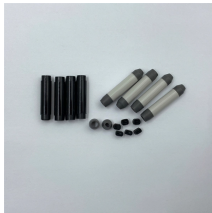
Learn the difference between a fiber terminal box and a fiber junction box, including functions, applications, capacity, and installation scenarios. ZION Communication provides a ...



Discover the world of Fiber Junction Boxes! Explore installation tips, different types, and the advantages they offer. Get expert insights for seamless fiber optic connectivity.



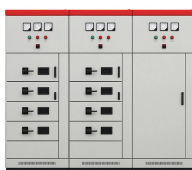
Fiber optic junction boxes are essential components in modern communication networks. They serve as the connection points where fiber optic cables are spliced, terminated, or distributed.



Explore reliable FTTH terminal boxes for secure fiber termination and distribution. Wall-mounted design, robust build, for home and industrial optical networks.



Explore reliable FTTH terminal boxes for secure fiber termination and distribution. Wall-mounted design, robust build, for home and industrial optical networks.



Optical cable junction boxes come in different types to suit specific installation scenarios. The primary types include: Wall-mounted junction boxes: Ideal for indoor use, these boxes can be ...



Use only shielded cable. Temperatures at the cable entry can reach 80° C. Selection of cable must be appropriate for the ambient temperature range in which the product is used.

Contact Us

For more information, pricing, or custom solutions, please contact us:

Website: <https://www.indzawo.co.za>

Email: sales@indzawo.co.za

Phone: +27 71 296 8473

Address: 22 Quantum Street, Midrand, 1685, Gauteng, South Africa

This document is for informational purposes only. Specifications subject to change without notice.

