

## Fdd optical module



### Overview

QSFP-DD is an advanced hot-pluggable optical transceiver form factor that doubles the bandwidth density of traditional QSFP28 modules by implementing a double-density design with eight electrical lanes instead of four. This module describes the command line interface (CLI) commands for configuring Optics on the Cisco 8000 Series Routers. Also, the supported keywords of a command vary based on the type of the optical module (coherent. Amphenol Network Solutions offers a full line of high-performing and high high-density fiber panels, modules and accessories for your data center, central office or headend. Pre-terminated panels, Patch and Splice and Patch only and AOMs (Advanced Optical Modules) configurations are supported by. Integrated circuits and reference designs help you create a smaller and faster optical module design used in high-bandwidth data communication applications. Designed for use in nearly every access network environment, the terminal is small enough to be placed in existing handholes or pedestals where space is paramount, on building.

## Fdd optical module



400G QSFPDD active optical cables (Figure 10) are designed for use in 400 Gigabit Ethernet links over OM4 multimode fibers, and contain eight multimode fibers (MMF) optic transceivers per end, each ...



For network vendors or data-centre buyers requiring OEM 800G QSFP-DD optical modules, the key differentiators are brand compatibility, correct coding/EEPROM, accurate labeling ...



What is QSFP-DD? QSFP-DD is an advanced hot-pluggable optical transceiver form factor that doubles the bandwidth density of traditional QSFP28 modules by implementing a double ...



Our product portfolio includes fiber panels, advanced optical modules, passives, and a suite of accessories to meet your needs. Define your network architecture, choose the panel configuration, ...



DFA2F1FDD1M1010F0P Pushlok® hardened connector technology is the key component enabling smaller terminals for FTTx networks than ever before. Designed for use in nearly every ...



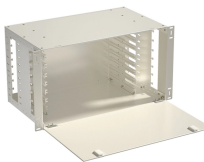
We offer wall mounts with optional locks in 1, 2, 4, 8 and 12 panel sizes. Multiple NID/MDU boxes for FTTH are available pre-loaded as well. We can customize any of our panels to use ribbon pigtailed, ...



IV. Optical Characteristics (EOL, TOP = 0 to +70 C, VCC = 3.135 to 3.465 Volts) Aligned with 400GBASE-FR4 as being defined by IEEE P802.3cu ... Notes:



Design requirements Modern optical module designs often require: Reduced power consumption to control and limit module temperature rise. Dynamic and precise control of laser diodes to regulate ...



This module describes the command line interface (CLI) commands for configuring Optics on the Cisco 8000 Series Routers. Not all commands are supported on both coherent and non ...



Comprehensive Optical Transceivers & SFP Module for High-Speed Networks LINK-PP offers a full range of optical transceivers and SFP module for modern data centers, telecom networks, and ...

## Contact Us

For more information, pricing, or custom solutions, please contact us:

Website: <https://www.indzawo.co.za>

Email: [sales@indzawo.co.za](mailto:sales@indzawo.co.za)

Phone: +27 71 296 8473

Address: 22 Quantum Street, Midrand, 1685, Gauteng, South Africa

This document is for informational purposes only. Specifications subject to change without notice.

