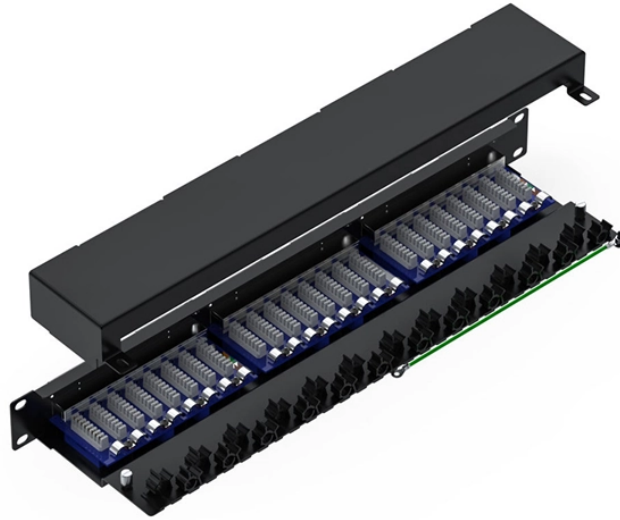


Exterior wall electrical cable tray effect



Exterior wall electrical cable tray effect



Our engineer's guide helps you choose the right outdoor cable tray based on environment, load, and corrosion resistance. Select HDG, Aluminum, or FRP with confidence.



The design and cost of the cable tray is greatly affected by this designation. In order to determine the most appropriate and economical system, a class should be selected that reflects the actual total ...



Ladder type cable trays are an excellent choice for outdoor projects, offering durability, enhanced ventilation, easy installation, and cost-effectiveness. Cables are well shielded and ...



This series of flanges are used to provide an weatherproof seal where the cable bus makes a transition through a wall, floor, or where cable bus housing is connected to an outdoor enclosure as required ...



Outdoor cable tray and raceway systems are engineered to provide reliable cable management in harsh, exposed environments. Designed to withstand weather, ...



Cable trays are often used on external walls and roofs, before cables enter the building through a roof penetration or vertical wall penetration – and ...



This guide provides step-by-step instructions on installing a cable tray on a wall, covering different types of cable trays, tools needed, and safety tips.



When fitting cable trays and their accessories, the products are cut on site to create changes of direction, adjust sections, etc. Damage can also occur during handling; as a result, both the ...



Master the complete process of running a cable through an exterior wall, ensuring a durable, watertight, and energy-efficient seal.



Maximize cable lifespan and safety with our Outdoor Cable Trays that are designed to promote airflow, preventing overheating in outdoor electricity networks. The ventilation effectively dissipates heat, ...



In designing supports for a cable tray system, consideration should be given to the loads associated with future cable additions and any additional loading that may be applied to the cable tray system (e.g., ...



Choose from an extensive selection of metallic ladder tray with a variety of rung and bottom styles to choose from. Finishes include steel, 304L and 316L stainless steel to meet the needs of any ...

Contact Us

For more information, pricing, or custom solutions, please contact us:

Website: <https://www.indzawo.co.za>

Email: sales@indzawo.co.za

Phone: +27 71 296 8473

Address: 22 Quantum Street, Midrand, 1685, Gauteng, South Africa

This document is for informational purposes only. Specifications subject to change without notice.

