

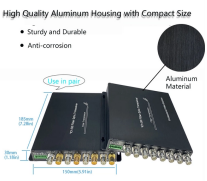




# Exporting Optical Power Meter Results

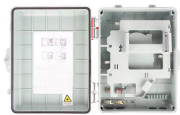


## Exporting Optical Power Meter Results

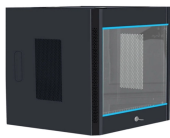
	<p>OpTest allows easy downloading, displaying and reporting of optical power measurements using ODM's RP-460 and UPM-100 power meters. To allow the Windows® operating system to install the USB ...</p>
	<p>This optical power meter is widely used in the construction, maintenance, inspection and acceptance of optical fiber communication network projects. The combination of fiber optic power meter &amp; light ...</p>
	<p>This OTDR-based application uses multipulse acquisitions and advanced algorithms to deliver detailed information on every element on a link. The iOLM module can be equipped optionally with an inline ...</p>
	<p>trace files simultaneously. TRM 2.0 Advanced software includes all Basic software features and adds bi-directional OTDR trace averaging, macrobend detection, and export of .S.</p>
	<p>Using the supplied Test Results Management - TRM software and USB connection, test records are transferred to a PC for analyzing, generating professional test reports, and printing.</p>



The AQ2180 series are full featured palm sized and lightweight optical power meters designed for use with an optical Light source to perform optical loss measurements on optical fiber cables.



The LXM Light Source and PXM Power Meter test sets are an MPO native source and MPO 12 native power meter. As a fully featured Tier-1 certification solution, the LXM and PXM combo units test 12 ...



To remove results before saving, select the checkbox next to the reading (s), then tap Remove. After saving power or loss readings to a file, access the file in the Results tab.



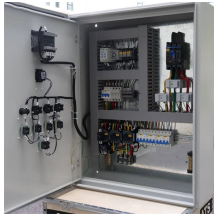
TRM Basic Software enables users to quickly view results, generate acceptance reports, analyse OTDR traces, loss or certification results and batch-edit OTDR traces uploaded from all AFL FlexScan, ...



I wanted to find out if it is possible to export the output result of any component, such as a BER Analyzer or Optical Power Meter, as a text file or a csv file.



Software with graphical user interfaces for operating Thorlabs' power and energy meters (except PM320E) and other compatible devices, device drivers, and run-time engines.



The Data Export - Extended Report gives logged measurement data in CSV file format. Use this report to import and analyze data in a third-party application, such as Microsoft Excel.

## Contact Us

For more information, pricing, or custom solutions, please contact us:

Website: <https://www.indzawo.co.za>

Email: [sales@indzawo.co.za](mailto:sales@indzawo.co.za)

Phone: +27 71 296 8473

Address: 22 Quantum Street, Midrand, 1685, Gauteng, South Africa

This document is for informational purposes only. Specifications subject to change without notice.

