

Explosion-proof optical cable terminal box



Explosion-proof optical cable terminal box



Network Cabinet & Rack

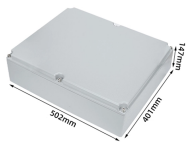
Constructed with a high-strength copper-free aluminum alloy, this explosion-proof terminal boxes ensures safety by containing internal explosions and isolating the external hazardous atmosphere. ...



We offer bespoke, custom-made terminal boxes and terminal box combinations, as well as standard products with short delivery times. Our products are certified for installation technologies all over the ...



Learn more about the diferent ranges of highly durable explosion-protected terminal boxes and junction boxes from Pepperl+Fuchs.



These splice boxes are designed specifically for protecting optical fibre cable splices, particularly in applications within hazardous areas classified as Zone 1 and 21 (Gas) and Zone 2 and 22 (Dust).



BXJ93 Explosion Proof Fibre Optic Splice Box Key Features: IECEx & ATEX Certified for use in explosive atmospheres High-density fiber capacity supporting SC, LC, ST or custom termination ...



With the increasing digitization and requirement for high-speed networking, the Bartec Technor junction boxes for fiber optic signals performs dependably in the harshest of environments.



Hexlon Explosion Proof Terminal and Junction Boxes, IECEx and ATEX certified, offering reliable connections in Zone 1 and Zone 2.



With the increasing digitization and requirement for high-speed networking, the ...



These explosion proof junction boxes / terminal boxes, plugs, sockets & connectors are for use in explosive atmospheres in compliance with the ATEX 94/9/EC ...



The GR.TFO splice boxes in glass fiber reinforced IP66 polyester enclosures enable safe protection of fiber optic cable splices in hazardous areas. Each of these sturdy splice boxes can hold up to 8 ...



The GR.TFO.* series is a range of fiber optic splice boxes designed for protection of optical fiber cable splices in hazardous areas. Up to 8 splice trays are installed inside the sturdy GRP enclosure.



Terminal Box KHJ offers a large selection of terminal boxes and junction boxes for wiring connection in explosion hazardous areas. They are certified according to the latest ATEX and IEC EX standards. ...

Contact Us

For more information, pricing, or custom solutions, please contact us:

Website: <https://www.indzawo.co.za>

Email: sales@indzawo.co.za

Phone: +27 71 296 8473

Address: 22 Quantum Street, Midrand, 1685, Gauteng, South Africa

This document is for informational purposes only. Specifications subject to change without notice.

