

# Explosion of a distribution box connected to a ground wire



## Overview

Grounding of Metal Cabinets: Metal explosion-proof distribution boxes must be reliably grounded, with the grounding wire connected to the cabinet's outer shell. For three-phase systems without a neutral wire, the grounding wire should have a. Zone Classification: Explosive atmospheres are categorized into zones according to how often and for how long explosive gasses or particles are present. Zones 0, 1, and 2 handle gases and vapors, while Zones 20, 21, and 22 handle dust. This section sets forth requirements for electric equipment and wiring in locations which are classified depending on the properties of the flammable vapors, liquids or gases, or combustible dusts or fibers which may be present therein and the likelihood that a flammable or combustible. Explosion-proof distribution boxes are mainly used in coal mines, fire stations, petroleum, petrochemical installations and textile and other flammable and explosive places. So in the choice of power distribution box to pay more attention to the. Internal Arrangement: Electrical components and wiring within the box must be neatly organized, clearly labeled, and aesthetically arranged for ease of maintenance. The interior should be free from dust and debris. Wire Specifications: Wall penetrations require double

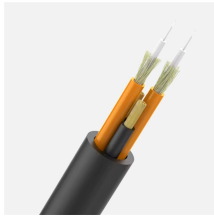
sealing with flameproof putty and compression glands: Fundamental Principle  
: Your safest distribution box is the one that's not in the hazardous area at all.  
Always ask: "Does this need to be here?"

" before installing.

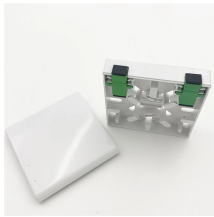
## Explosion of a distribution box connected to a ground wire



Ensure containers are in contact with each other or connected using a bonding cable and remain continuously electrically bonded throughout the transfer to prevent accumulation of static electric ...



A massive explosion at a Texas crude oil refinery shot up towering plumes of dark smoke and physically shook locals' homes before they were ordered to shelter in place Monday.



On October 10, 2025, a series of explosions occurred at an Accurate Energetic Systems manufacturing facility in Humphreys County, Tennessee, killing sixteen people and injuring seven, one seriously. ...



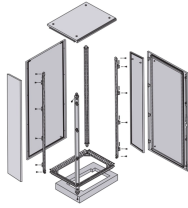
⚠ Critical Mistake : Using regular building-grade cables in explosion areas because "they look similar" to certified versions is like using duct tape for electrical repairs - it might look okay ...



Consequences: the wiring in the lighting explosion-proof distribution box (board) is messy, and the second board in the box presses against the pipe opening, which affects the entry of wires into the box.



Explosion-Proof Enclosures: To make sure the explosion-proof enclosure can safely confine any ignition that happens inside, it is necessary to have correct grounding for equipment placed in them.



A police cordon is in place in a residential area of Bristol after a suspicious explosion killed a man and a woman, and injured three others, including a child.



Several people were rushed to a hospital following a possible boat explosion near Miami Saturday afternoon, fire officials said.



An explosion and fire rocked a Chalmette refinery on Friday afternoon, shaking homes miles away and causing nearby lunchtime diners to scatter, but no injuries were reported and the blaze was ...



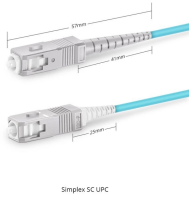
Equipment of the non-heat-producing type (such as junction boxes, conduit, and fitting) and equipment of the heat-producing type having a maximum temperature of not more than 100 degrees C (212 ...



Proper installation, wiring, and usage are critical to ensuring the safety and functionality of these systems. Below, we will discuss the correct wiring methods for an explosion-proof...



A large explosion at Chalmette Refining near New Orleans prompted emergency response. It is unclear if there were any injuries or fatalities reported.



MADISON COUNTY, Ill. — A deadly explosion and fire at a home in Troy, Illinois, prompted a massive emergency response late Sunday night. It happened at a home in the 8000 ...



Explosion-proof electrical distribution boxes are essential for safety in hazardous environments. These specialized enclosures are built to contain internal explosions and stop the ignition of flammable ...



Proper installation, wiring, and usage are critical to ensuring the safety and functionality of these systems. Below, we will discuss the correct wiring methods ...



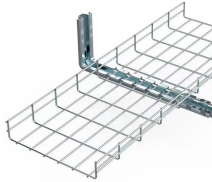
Grounding of Metal Cabinets: Metal explosion-proof distribution boxes must be reliably grounded, with the grounding wire connected to the cabinet's outer shell. For three-phase systems ...



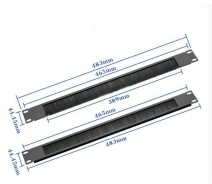
Electrical explosion happens during arc flash or faults, causing heat, blast pressure, and injuries. Learn causes, effects, and how to prevent electrical accidents.



Several people were hurt after a possible boat explosion Saturday near the Haulover Sandbar in Miami, Florida.



Regulation 413-02-27 of BS 7671 states: Where supplementary equipotential bonding is necessary, it shall connect together the exposed conductive parts of equipment in the circuits concerned and ...



A massive, fiery explosion at a house in Queens sent several New York City police officers flying through the air as they were responding to a call of a man inside armed with a knife ...



Eleven people were taken to the hospital on Saturday after a possible boat explosion in Haulover Beach, fire rescue officials said.

## Contact Us

For more information, pricing, or custom solutions, please contact us:

Website: <https://www.indzawo.co.za>

Email: [sales@indzawo.co.za](mailto:sales@indzawo.co.za)

Phone: +27 71 296 8473

Address: 22 Quantum Street, Midrand, 1685, Gauteng, South Africa

This document is for informational purposes only. Specifications subject to change without notice.

