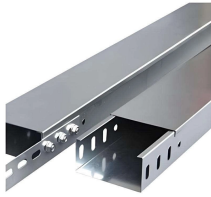


European Carbon and Sulfur Spectrometer



European Carbon and Sulfur Spectrometer



A sequential wavelength dispersive X-ray fluorescence spectrometer for comprehensive elemental analysis in geology, materials science and environmental samples.



Up to four highly sensitive infrared (IR) cells allow for precise measurement of both high and low carbon and sulfur concentrations in only one analysis. The measuring range of each cell may be adapted to ...



The new carbon / sulfur analyzer ELEMENTRAC CS-i was developed for the accurate and safe analysis of carbon and sulfur in inorganic samples. The analyzer is equipped with a powerful induction ...



Because of adopting computer technology, intelligent equipment, screen display, text and data collection, deal with problems and so on have reached the advanced the world level, more industries ...



In conjunction with a comprehensive range of complimentary peripheral inlet systems, our stable isotope analyzers provide high performance measurements of carbon, hydrogen, nitrogen, oxygen, and ...



Organic samples are usually characterized by a high carbon content (60 - 100 %) and combustibility (e. g. coal, coke, wood). The complete release of carbon and sulfur takes place at temperatures of ...



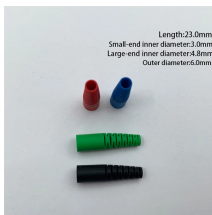
Up to four highly sensitive infrared (IR) cells allow for precise measurement of both high and low carbon and sulfur concentrations ...



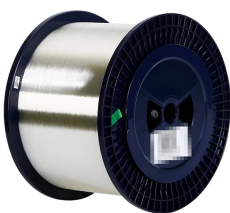
The CS-1232 Carbon and Sulphur Analyser is designed to determine Carbon and Sulphur in minerals and organic materials. The CS-1232 uses a vertical resistance furnace that significantly simplifies the ...



The ELEMENTRAC CS-i is available as a single-element analyzer for carbon or sulfur only, or in a configuration for simultaneous measurement of both carbon and sulfur.



The Carbon and Sulfur Analyzer TT-CSA1500 is designed for analyzing solids, particularly metallic materials, but also works well with other inorganic materials such as ceramics, ores, cement, and clays.



The elemental analyzer ELEMENTRAC CS-i measures the carbon and sulfur concentration in predominantly inorganic samples through combustion in an induction furnace and the subsequent ...

Contact Us

For more information, pricing, or custom solutions, please contact us:

Website: <https://www.indzawo.co.za>

Email: sales@indzawo.co.za

Phone: +27 71 296 8473

Address: 22 Quantum Street, Midrand, 1685, Gauteng, South Africa

This document is for informational purposes only. Specifications subject to change without notice.

