

## Empty enclosure of a construction site-specific three-level electrical distribution box



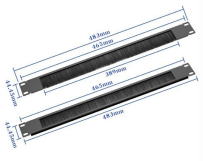
## Empty enclosure of a construction site-specific three-level electrical



Find your construction site electrical enclosure easily amongst the 25 products from the leading brands (HLC, WALTHER WERKE, DIGITAL ELECTRIC, ...) on DirectIndustry, the industry specialist for your ...



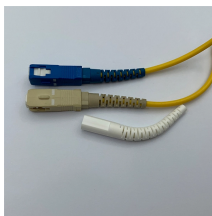
Electrical panels must be properly grounded and bonded to ensure safety and prevent electrical shocks. The neutral and ground must be separated at sub-panels but bonded using jumper wire at the main ...



This fact sheet explains how to apply the requirements shown in AS/NZS 3012:2019 Electrical installations - construction and demolition sites (AS/NZS 3012:2019), which is called up as a ...



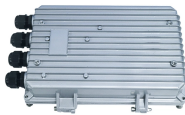
These instructions define the areas in which assistance may be given to a primary customer to coordinate the customer's and DTE Electric systems, to increase the operating safety of high voltage ...



This specification guide provides system designers, electrical engineers, and procurement professionals with the technical criteria needed to select compliant outdoor electrical ...



Explore the importance of electrical enclosures in protecting and housing electrical components. Learn about different types, materials, standards, applications, and selection guidelines ...



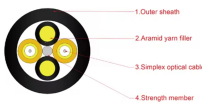
UFC 3-501-01 provides the governing criteria for electrical systems, explains the delineation between the different electrical-related UFCs, and refers to UFC 3-550-01 for exterior electrical system requirements.



This publication describes graphic symbols used to represent electrical wiring and equipment on construction drawings. In this publication, the term “electrical” is used to include electrical, electronic, ...



Metal raceways, cable armor, and other metal enclosures for conductors shall be metallically joined together into a continuous electric conductor and shall be so connected to all boxes, fittings, and ...



Type 1 Enclosures constructed for indoor use to provide a degree of protection to personnel against access to hazardous parts and to provide a degree of protection of the equipment inside the ...

## Contact Us

For more information, pricing, or custom solutions, please contact us:

Website: <https://www.indzawo.co.za>

Email: [sales@indzawo.co.za](mailto:sales@indzawo.co.za)

Phone: +27 71 296 8473

Address: 22 Quantum Street, Midrand, 1685, Gauteng, South Africa

This document is for informational purposes only. Specifications subject to change without notice.

