

## Electrical cable tray hole sealing quota



### Overview

Define Tray Dimensions: Enter the width and depth of your planned cable tray (in mm or inches). You can also set a custom limit. Our sealing modules have removable layers enabling a perfect fit to cables and pipes of different sizes. Just peel off layers until the module fits. The built in spare capacity makes it easy to open up the seal and change. NEC Article 392 governs cable tray installations, covering tray types, fill limits, cable types permitted, and ampacity adjustments. Select Fill. All rights, including translation into other languages, reserved under the Universal Copyright Convention, the Berne Convention for the Protection of Literary and Artistic Works, and the International and Pan American copyright conventions.



## Electrical cable tray hole sealing quota



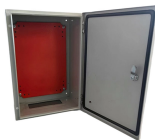
Our cable entry seals are available in standard and threaded types, have factory-applied adhesive, and can accommodate single or multiple cables up to 2.5 ...



This guide covers the cable tray types and their appropriate applications, the fill rules for each configuration, ampacity derating requirements, separation of power and signal cables, and the ...



Our wind certification report provides you with list of acceptable B-Line series cable tray supports, fittings and covers based off of the environmental conditions, cable loading, and type of cable tray in your ...



This article provides a comprehensive framework that governs various aspects of cable tray installations, including the types of cables that are deemed acceptable for use, requirements for ...



Ensure your cable runs meet NEC safety standards with our Cable Tray Fill Calculator. Calculate fill ratios for CAT6, Power, and Fiber cables to prevent overheating and inspection failures.



Properly sizing your cable tray is critical for safety and compliance. Our free calculator helps you determine the correct tray size based on NEC and IEC standards.



Specifies requirements for metal cable trays and associated fittings designed for use in accordance with the rules of Canadian Electrical Code, Part I and the National Electrical Code®



The MLU provides an experience-based reference for estimating the electrical construction labor required to install typical electrical and communications systems.



Attaching a channel cable tray by using the method illustrated in Figure 3-88 maintains the electrical requirements, and the bolted mechanical connection while providing a practical method for dropping ...



Cable tray length is selected based on the load to be supported, the distance between the supports (also referred to as the span), and handling and installation constraints.



The built in spare capacity makes it easy to open up the seal and change or add cables, without punching new holes or adding material, whenever there is a need.



Where the cable type may be used, cable tray may be installed to support it except as per Section 392.12 which states that cable trays shall not be installed in hoistways or where subject to severe ...



Cable structure

How do you seal a cable entry hole? This guide covers how to properly seal cable entry holes, what products you need and why it is an important thing to do.



This guide will walk you through how to choose an appropriate sealant and apply it correctly to walls, ceilings, and floors. We'll also cover cable ...

## Contact Us

For more information, pricing, or custom solutions, please contact us:

Website: <https://www.indzawo.co.za>

Email: [sales@indzawo.co.za](mailto:sales@indzawo.co.za)

Phone: +27 71 296 8473

Address: 22 Quantum Street, Midrand, 1685, Gauteng, South Africa

This document is for informational purposes only. Specifications subject to change without notice.

