

# **Electrical Distribution Box Level 3 Standard**



## Electrical Distribution Box Level 3 Standard



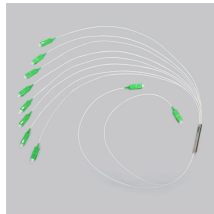
A comprehensive list of enclosure types (e.g., Type 1, Type 3, Type 4X, etc.), explaining their protection levels. A NEMA ratings chart and comparison table of enclosures for indoor and ...



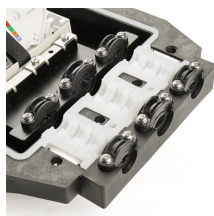
Additional services are permitted for buildings with capacity requirements exceeding 2000A, or if the load requirements of a single-phase installation exceeds the serving electric utility's power capacity.



Table of Electrical Distribution Systems in North America The following table shows the Line to Line and Line to Neutral voltage levels in the US and CA for single phase and three phase system in both Wye ...



The NEMA Enclosure Type 3 not only meets the IP 45 Enclosure Rating, but also exceeds the IEC requirements because the NEMA Type requires an outdoor corrosion test; a gasket aging test; a dust ...



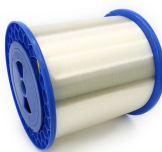
Learn how to install a distribution box safely and correctly. Covers wiring, placement, standards, and expert tips for a compliant setup.



Classification of Voltage Levels and Services  
 Voltage Levels in The United States  
 Electrical Services Configuration in North America  
 Table of Electrical Distribution Systems in North America  
 Prior to beginning this article, it is important to note that the power distribution systems in the US utilize the following configurations for various voltage levels. Supply Frequency in the US 1. 60 Hz No. of Phase: 1. Single Phase 2. Split Phase 3. Three Phase Phase Configuration: 1. Wye with Neutral (Star or Y) 2. Delta - Generally, Neutral is ...  
 See more on electrical technology  
 Occupational Safety and Health Administration



Secondary distribution box: distribution boxes for each floor or building (according to actual conditions); Third level distribution box: refers to the final junction box of each electrical ...



panelboard in Fig. 3 are standard. The black “hot” wire is connected to breaker slots #1 and #2. The red “hot” wire is connected to breaker slots #3 and #4. The potential between the red and black wires is ...



Switchboards, panelboards, and distribution boards installed for the control of light and power circuits, and motor control centers shall be located in dedicated spaces and protected from damage.



This section contains specifications to assist customers in designing self-generating and energy storage systems intended to operate in parallel with the Department's electric distribution system.



Design requirements for low voltage distribution boxes cover NEC, IEC, and safety standards to ensure reliable, compliant electrical installations. You must make safety your top priority ...

## Contact Us

For more information, pricing, or custom solutions, please contact us:

Website: <https://www.indzawo.co.za>

Email: [sales@indzawo.co.za](mailto:sales@indzawo.co.za)

Phone: +27 71 296 8473

Address: 22 Quantum Street, Midrand, 1685, Gauteng, South Africa

This document is for informational purposes only. Specifications subject to change without notice.

