

## Dpi aggregation switch



### Overview

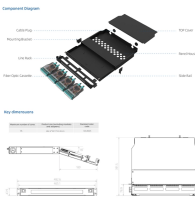
With AXIS D8308 Fiber Aggregation Switch you can connect multiple Axis devices using fiber midspans over long distances. An 8-port, Layer 2 switch made for 10G SFP+ connections. Faster replacement and priority support, covered for 5 years. It also enables easy expansion by simply adding more fiber or network. Provides 1G, 2.5G, and 10G speeds for flexible customization, ensuring optimal performance, compatibility, and scalability. Flexible interface options like copper, fiber, and PoE ensure seamless integration and cost-effective deployment. Supports stacking for easier management, improved redundancy. This compact managed Layer 2 switch offers eight 10G SFP+ ports and supports high-bandwidth links, making it ideal for aggregation switching to any UniFi device that deploys various interconnect topologies. 0.4 Mpps forwarding rate. The three layers of a traditional three-layer network design are the core layer, aggregation layer, and access layer. As the physical part of the aggregation layer, aggregation switches typically play a key role. The weapon of choice for service-oriented network monitoring is Deep Packet Inspection (DPI) which are high performance software solutions that run on standard server hardware platforms enabling

providers to 1) identify, classify and even selectively block IP traffic to prevent revenue leakage from.

## Dpi aggregation switch



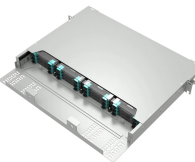
Buy Ubiquiti UniFi 8-Port 10G SFP+ Managed Aggregation Switch featuring 8 x ...



Zyxel CX4800-56F high-density 100G/25G Layer 3 aggregation switch with Nebula cloud, 4.0 Tbps capacity, and high-availability system design.



As the physical entity of the aggregation layer, the aggregation switch's primary function is to aggregate the data of the access layer switch and forward it to the core switch to reduce the ...



The technical challenge for DPI monitoring is akin to that of searching for pins in a haystack; more precisely, searching for fragments of pins from multiple gigantic haystacks.



Buy Ubiquiti UniFi 8-Port 10G SFP+ Managed Aggregation Switch featuring 8 x 10G SFP+ Ports, 160 Gb/s Switching Capacity, 119.04 Mpps Forwarding Rate, Rack-Mountable Design, Supports High ...



An aggregation switch is a network device that consolidates traffic from multiple access switches, wireless access points, or other edge devices and ...



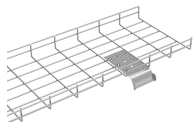
Provides advanced Security ACLs for improved security, traffic control, and QoS, ensuring efficient and optimized networking.



to Go 1. settings. any If VLANS. switch. On 3. interface. Router. device.



An 8-port, Layer 2 switch made for 10G SFP+ connections.



AXIS D8308 Fiber Aggregation Switch is easy to install using standard Axis tools as AXIS IP Utility and AXIS Device Manager. It comes with an individual password, easy to use setup wizard, and a ...



An Aggregation or "Top-of-Rack" switch is designed to connect everything in a rack at high speeds, then have an even bigger pipe out to the rest of the network.

## Contact Us

For more information, pricing, or custom solutions, please contact us:

Website: <https://www.indzawo.co.za>

Email: [sales@indzawo.co.za](mailto:sales@indzawo.co.za)

Phone: +27 71 296 8473

Address: 22 Quantum Street, Midrand, 1685, Gauteng, South Africa

This document is for informational purposes only. Specifications subject to change without notice.

