

## Double-section busbar wiring method



## Double-section busbar wiring method



The double breaker-double bus configuration consists of two main buses, each normally energized. Electrically connected between the buses are two circuit breakers and, between the ...



As the name says, there are two bus bars, bus 1 and bus 2, as we can see in the diagram, each bay or equipment such as a line, or a transformer is connected to both the buses, through breaker and ...



By providing each circuit with two dedicated circuit breakers—one to each of two main buses—it enables ride-through of a single bus fault, facilitates maintenance without load interruption, ...



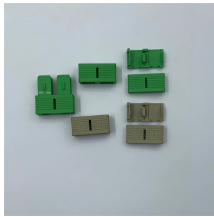
By providing each circuit with two dedicated circuit breakers—one to each of two main buses—it enables ride-through of a single bus fault, facilitates ...



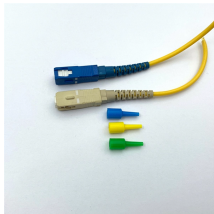
Assemble the busbar connection while installing each cubicle. The busbar shims and hardware bag in the cubicle packaging. Access the busbars through the side access of the cubicle. NOTE: It is also ...



The double bus-bar scheme with bypass isolators across circuit breakers is suitable for large power stations and grids requiring varied circuit group



The wiring of double bus and double section primary current loop is shown in figure 3.



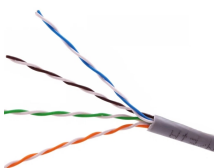
Two common configurations used in high-voltage substations to achieve this are double busbar wiring and 2/3 circuit breaker wiring. These setups are designed to enhance system ...



Three-phase power with currents of up to 5 Amps per phase can be carried, measured and switched by means of the double busbar model. Also present on the board is a branch/ connector which can be ...



Such an arrangement consists of two bus-bars, known as main bus-bar and transfer bus-bar used as an auxiliary bus-bar. Each generator and feeder may be connected to either bus-bar with the help of bus ...



Abstract— This paper addresses the optimization of double busbar substations with multiple electrical bays to prevent overcurrents through the coupler and therefore enhance grid reliability.

8-Port PLC Fiber Splitter Box  
12-Port SC Fiber Splitter Box

Size: 120x120x100mm  
Material: ABS, PC



It also discusses the different busbar configurations adopted by the Andhra Pradesh Transmission Corporation (APTRANSCO) at various voltage levels. - Download as a PDF, PPTX or view online for ...

## Contact Us

For more information, pricing, or custom solutions, please contact us:

Website: <https://www.indzawo.co.za>

Email: [sales@indzawo.co.za](mailto:sales@indzawo.co.za)

Phone: +27 71 296 8473

Address: 22 Quantum Street, Midrand, 1685, Gauteng, South Africa

This document is for informational purposes only. Specifications subject to change without notice.

