

## Double-fold elbow of cable tray



## Double-fold elbow of cable tray



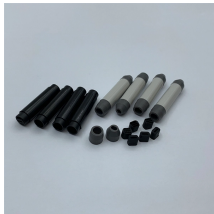
Eagle Basket is a welded wire mesh cable management system offering zero hardware connection of straight lengths. The 2" x 4" mesh allows for continuous airflow to prevent heat, dust, and ...



Our wind certification report provides you with list of acceptable B-Line series cable tray supports, fittings and covers based off of the environmental conditions, cable loading, and type of cable tray in your ...



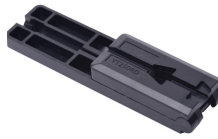
Depth (D): 1.2mm, 1.5mm, 2.0mm. Material: Mild steel sheet / PO steel sheet. Constructed Type: MIG welding. er coating / Hot Horizontal Elbow.



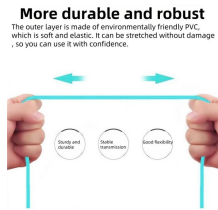
It is designed for mechanical support and strain relief in long runs of cable and creates a smooth gradual bend for cable. Rail and stringer material is 16 ga steel tubing.



Eaton's submittal builder tool for B-Line series cable ladder and tray allows you to easily filter, select and download straight section, fitting and accessory submittals.



The nVent CADDY Wire Basket Tray PreForm Elbow 90° is a precision-engineered solution designed to streamline cable tray installations when a directional change is needed. With its pre-galvanized steel ...



**More durable and robust**  
 The outer layer is made of environmentally friendly PVC, which is soft and elastic. It can be stretched without damage - so you can use it with confidence.

If it has excellent electrical continuity and is integrated in the installation's equipotential bonding system, a metal cable tray reduces the coupling's impact and thus contributes to good EMC of the electrical ...



A small amount of engineering is required to change the width of a cable tray to gain additional wiring space capacity. Change is a complex problem when conduit banks are involved.



Cable tray length is selected based on the load to be supported, the distance between the supports (also referred to as the span), and handling and installation constraints.



The aluminum I-beam design of ITray is perfect for industrial installations with large diameter cables in long span situations, minimizing total tray width and creating a smooth transition between straight ...

## Contact Us

For more information, pricing, or custom solutions, please contact us:

Website: <https://www.indzawo.co.za>

Email: [sales@indzawo.co.za](mailto:sales@indzawo.co.za)

Phone: +27 71 296 8473

Address: 22 Quantum Street, Midrand, 1685, Gauteng, South Africa

This document is for informational purposes only. Specifications subject to change without notice.

