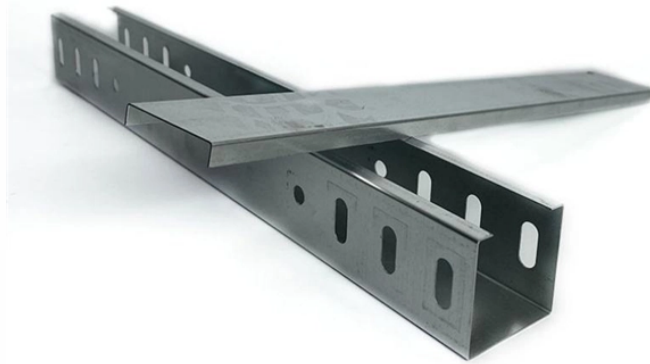


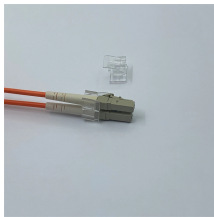
Dongya Distribution Cabinet Busbar



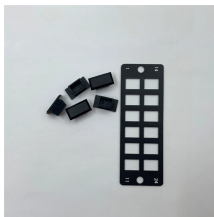
Dongya Distribution Cabinet Busbar



Bus bars are current conductors which ensure effective and efficient ...



The bus bar chamber is a crucial component in electrical installations, providing a safe, organized, and secure space for the bus bars, ensuring effective and efficient power distribution.



Discover what a bus bar is in electrical systems, how it works, the different types, materials used, key benefits, and where it's applied. Cover everything you need to know about bus bars in modern power ...



TE Connectivity's busbar solutions are typically made from aluminum or copper with electrical distribution applications in mind, with the ability to transmit high current power from the source to the ...



Excellent Electrical Performance: With a proper configuration of copper busbars, it has a strong current-carrying capacity, low power losses, and ensures stable operation.



These bars are tin-plated copper and have stainless steel terminals. Also known as bus bars, they serve as connection points between wires with ring or spade terminals. The underside is sealed, so the ...



The busbar disperses the heat generated during electricity transmission and distribution to the external environment effectively. The body of the busbar system, made from hardened aluminum profiles or ...



Let us guide you on your dongya distribution box busbar quest with our comprehensive selection, perfectly aligned with your needs.



Get Dongya Construction Site Distribution Box Factory, Dongya Construction Site Distribution Box Factory price, suppliers, manufacturers, wholesalers, dropshippers, agents, distributors from ...



Sell Construction Site Distribution Box Supplier Dongya in bulk to verified buyers and importers. Connect with businesses actively looking to buy wholesale Construction Site Distribution Box Supplier Dongya ...



Bus bars are current conductors which ensure effective and efficient distribution of power. Bus bars are widely used in power engineering for the construction of electric power cabinets and switchgear ...

Contact Us

For more information, pricing, or custom solutions, please contact us:

Website: <https://www.indzawo.co.za>

Email: sales@indzawo.co.za

Phone: +27 71 296 8473

Address: 22 Quantum Street, Midrand, 1685, Gauteng, South Africa

This document is for informational purposes only. Specifications subject to change without notice.

