

## Do not remove the distribution box



## Do not remove the distribution box



A distribution box (d-box) is a small concrete or plastic box installed between a septic tank and drain field that divides outgoing effluent equally among multiple leach lines. Without it, ...



Network Cabinet & Rack

As a verb, "do" means to perform, carry out, or execute an action. It's one of the most common verbs in English, used in a wide range of contexts, from simple tasks to complex actions.



To address distribution box problems, common solutions include inspecting for clogs, repairing damaged components, and ensuring proper drainage.



Do is one of three auxiliary verbs in English: be, do, have. We use do to make negatives (do + not), to make question forms, and to make the verb more emphatic. ...



Septic distribution box problems explained, including how to detect issues, common causes, warning signs, and effective repair solutions to protect your system.



Definition of do verb in Oxford Advanced American Dictionary. Meaning, pronunciation, picture, example sentences, grammar, usage notes, synonyms and more.



Explore common problems with septic tank distribution boxes, their symptoms, solutions, and maintenance tips for homeowners.



Feasible comes from faire, the French verb meaning "to do." Doable and feasible therefore originally meant literally the same thing: "capable of being done."



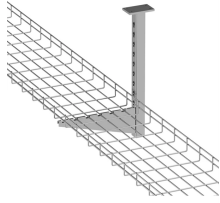
Learn what Do means in English Grammar and Usage. The term "do" serves primarily as an auxiliary verb that helps form questions, negatives, and emphatic...



Resolving a clogged distribution box requires professional expertise. This article explains the steps trained septic professionals typically take to diagnose and correct distribution box clogs, helping ...



In this article, we will explore the role of distribution boxes in septic systems, the circumstances under which they are necessary, and the potential alternatives.



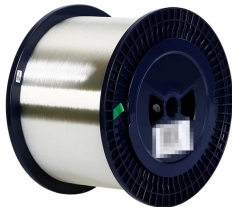
A failing distribution box can destroy your drain field. Learn what a D-box does, common failure signs, repair options, and Central Valley costs.



Use the Exchange admin center (EAC) or Exchange Online PowerShell to create a new distribution group in your Exchange Online organization or to mail-enable an existing group.



To perform the tasks or behaviors typically associated with (something), especially as part of one's character or normal duties. That talk show host just doesn't do subtle.



Because the D-box is a small thing and not deep, it shouldn't be a big job nor too costly to dig it out, install a larger one, make sure the D-box is not tipped, and that effluent is flowing as desired into ...



DO definition: to perform (an act, duty, role, etc.). See examples of do used in a sentence.



Call 703-895-4109 for all your septic tank pump outs, Insoections, repairs and new installation needs. #FreedomPlumbersAndPumper...more. Septic #DistributionBox replacement, #TheFreedomWay. Call...



If the distribution box is not working correctly, the effluent may not be evenly ...



When you do something, you take some action or perform an activity or task. Do is often used instead of a more specific verb, to talk about a common action involving a particular thing.



Do is a word of vehement command, or earnest request; as, help me, do; make haste, do. If thou hast lost thy land, do not also lose thy constancy; and if thou must die a little sooner, yet do not die ...



If the distribution box is not working correctly, the effluent may not be evenly distributed to the drain field, leading to clogging and failure of the system. Therefore, it is essential to maintain and inspect the ...

## Contact Us

For more information, pricing, or custom solutions, please contact us:

Website: <https://www.indzawo.co.za>

Email: [sales@indzawo.co.za](mailto:sales@indzawo.co.za)

Phone: +27 71 296 8473

Address: 22 Quantum Street, Midrand, 1685, Gauteng, South Africa

This document is for informational purposes only. Specifications subject to change without notice.

