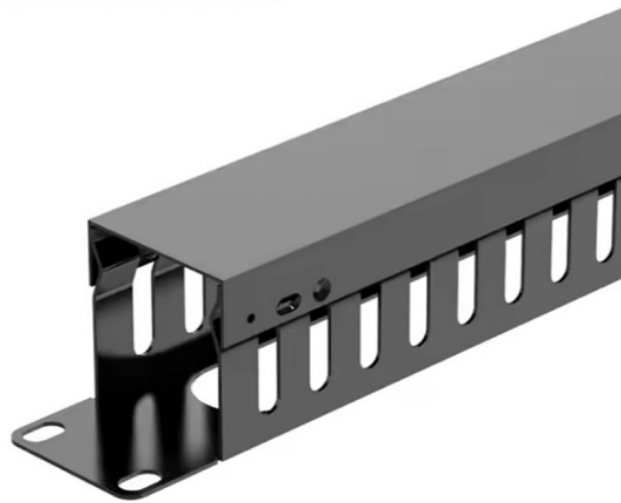


Distribution box with cable trays on top and bottom



Distribution box with cable trays on top and bottom



Perlegear 17" in-Wall Media Box, Electrical Box, Recessed Outlet Box and Media Enclosure for One Connect Box & Network Switches, Cable Management Kit with Cutting Template, Dust Bag & ...



It offers an ideal hybrid solution between cable tray and busway, delivering superior cable support and isolation for high-power transmission and a highly customizable design.



Fiber Optic Wall Mount Splice Distribution Enclosures Compact yet rugged, this wall-mount enclosure houses up to 12 splice trays and 75 ft of fiber slack. Dual-door security, top/bottom cable entry with ...



Easy-Hide Cable Solution The best part of the ultimate cable management box is that it easily hides all of your cable for a clean, organized look.



Wall-mountable or pole-mountable. Cable entry from top and bottom with six PG gland input ports and six PG gland output ports. Stackable splice trays for 96 mechanical or fusion splices. Swing tray ...



Explore wiring trough enclosures and electrical wireway boxes for protected cable routing, terminations, and junctions.



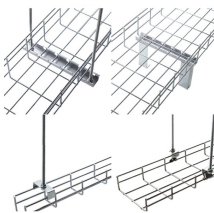
Snake Tray has been designing and manufacturing cable trays (cable management systems), power distribution and enclosures since 1996! Our goal is to provide our customers with cost-effective ...



Eaton's power distribution systems are designed to be as compact and energy efficient as possible while easy access for installation, operation and maintenance.



The Wire Basket Overhead Cable Tray Routing System is a robust cable management solution that optimizes system reliability, space utilization and scalability. It provides speed of deployment, ...



The cable management tray mounts discreetly under all Steelcase worksurfaces, fixed or height-adjustable. Use with Steelcase Powerstrip Plus to add convenient USB-C, USB A+C and standard ...

Contact Us

For more information, pricing, or custom solutions, please contact us:

Website: <https://www.indzawo.co.za>

Email: sales@indzawo.co.za

Phone: +27 71 296 8473

Address: 22 Quantum Street, Midrand, 1685, Gauteng, South Africa

This document is for informational purposes only. Specifications subject to change without notice.

