

Distribution box switch failure



Overview

It can occur due to overloaded circuits, short circuits, or ground faults. Solution: Identify the Cause: Check if the breaker is tripping due to overloading. This often happens when too many devices are plugged into one circuit. Healthy equipment can fail due to extreme currents, extreme voltages. Can take trip switch load down the line, change other circuit connected to the load, and see if it is still tripping. This article will explore some common problems of distribution boxes in depth, in order to provide reference. Distribution boxes are the unsung heroes of our electrical systems, quietly managing power until something goes wrong. When they start tripping, overheating, or making strange noises, it's more than just an inconvenience - it's your home's cry for help.

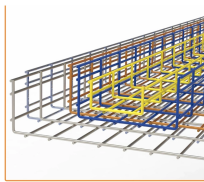
Distribution box switch failure



The following paragraphs in this technical article present the most common modes of failure for equipment that is most critical to distribution system reliability.



To sum up, qualified construction and maintenance operations, in conjunction with standards and safety measures, can effectively prevent and solve distribution box failures.



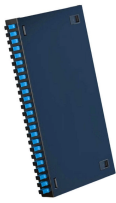
If you're not sure, it's best to contact a professional electrician for repairs. Preventive measures: Once the fault is resolved, regular inspection and maintenance of the distribution box is recommended to ...



While MCBs are designed for durability and reliability, the distribution box itself requires periodic inspection and maintenance to ensure safe operation.



Distribution boxes are the unsung heroes of our electrical systems, quietly managing power until something goes wrong. When they start tripping, overheating, or making strange noises, it's more ...



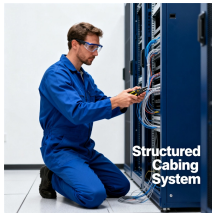
However, like any other component of an electrical system, distribution boards can develop issues over time, affecting electrical safety and performance. We will explore some of the ...



This blog explores common problems associated with 3-phase power distribution boxes and offers practical troubleshooting tips to keep your system running smoothly.



Many distribution boxes are damaged by lightning strikes every year. It is recommended to install zinc oxide surge arresters on all incoming and outgoing line sides of the distribution box.



Can take trip switch load down the line, change other circuit connected to the load, and see if it is still tripping. If still tripping, it shows that switch is broken.



The main problems encountered with distribution boxes include installation and layout problems, electrical connection and grounding problems, maintenance and care problems, ...

Contact Us

For more information, pricing, or custom solutions, please contact us:

Website: <https://www.indzawo.co.za>

Email: sales@indzawo.co.za

Phone: +27 71 296 8473

Address: 22 Quantum Street, Midrand, 1685, Gauteng, South Africa

This document is for informational purposes only. Specifications subject to change without notice.

