

Distribution box hanging installation parts

LoRawan outdoor base station

- * Industrial Internet gateway
- * Compatible with LoRaWAN network,
- * ClassA/B/C mode
- * Support 8/16 channel
- * Supports PoE power
- * supply and backup battery power supply
- * 10KV lightning protection



Distribution box hanging installation parts



Manufactured to universal industry standards, DIN rails allow compatible components to snap or slide into place, simplifying installation and enabling flexible panel layouts without the need for individual ...



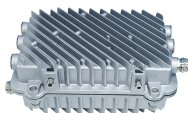
From floor-mount to wall-mount box supports, we offer a variety of options to mount just one or up to 5 boxes. Find out how to save on installation time.



Choose from our selection of electrical box brackets, including mounting adapters, mounting brackets, and more. Same and Next Day Delivery.



Features Mount horizontally or vertically from a single 3/8" threaded rod Bendable tabs secure plate in vertical installation Multiple markings for easier box alignment Pre-punched holes for rear raceway ...



Distribution Box Installation: Put the distribution box on the installation surface, and align the position of the expansion bolts and tighten the screws. This step needs to be checked carefully, ...



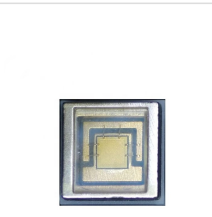
Shop MISUMI for all your Electrical Enclosure Mounting Brackets and Enclosure Parts needs. MISUMI offers free CAD download, short lead times, competitive pricing, and no minimum order quantity.



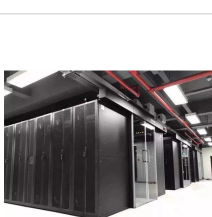
With this structure, we can install the components of irregular heights easier and faster. All the components, wires and connections are under the protective cover due to the same height, ...



Find electrical box mounting hardware at Lowe's today. Shop electrical box mounting hardware and a variety of electrical products online at Lowes .



Comply with standards and prevent cable damage with the DST-1200 metal distribution D ring. Buy now in packs of 25 from Southwire.



It includes all the necessary components for a fast and easy installation, whether you're a professional or a DIY enthusiast. With its high-strength cables and secure mounting system, this kit helps prevent ...

Contact Us

For more information, pricing, or custom solutions, please contact us:

Website: <https://www.indzawo.co.za>

Email: sales@indzawo.co.za

Phone: +27 71 296 8473

Address: 22 Quantum Street, Midrand, 1685, Gauteng, South Africa

This document is for informational purposes only. Specifications subject to change without notice.

