

# **Direct Sales Outdoor Wiring Box with 24 Cores**



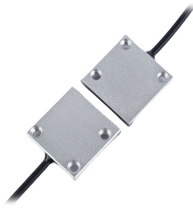
## Direct Sales Outdoor Wiring Box with 24 Cores



Get free shipping on qualified Outdoor Weatherproof Boxes products or Buy Online Pick Up in Store today in the Electrical Department.



Explore the details, specifications and video of our Outdoor Water-proof FTTH Distribution Terminal Box, and order high-quality Outdoor Water-proof FTTH Distribution Terminal Box from our factory directly ...



Ensure that the termination box can accommodate at least 24 fiber cores, and consider whether it offers expandability options for future network growth. Look for flexibility in tray and adapter configurations ...



Designed for easy installation and maintenance, it features a double-layer structure for efficient space use, accommodating 24 SC/LC Duplex adapters, a 24 FO splice capacity, a 1×16 SC PLC splitter, ...



Outdoor fiber distribution box offer a variety of features that make them ideal for managing fiber optic networks. Here are some of the key features: Outdoor fiber distribution box is designed to withstand ...



Designed as a high-density termination point in FTTH networks, focusing on supporting 24 SC adapters for extensive end-user connections. Perfect for outdoor installations (utility poles, building exteriors) ...



With a waterproof and dustproof rating of IP65, this distribution box can withstand extreme weather conditions and protect the fiber optic cables inside. It accommodates up to 24 fiber optic cores, ...



The 8 port ftth fiber distribution with 24-core splicing capacity is an outdoor ...



Discover durable 24x24 NEMA boxes for outdoor and indoor use. Waterproof, dustproof protection for electrical systems.



The 8 port ftth fiber distribution with 24-core splicing capacity is an outdoor enclosure designed for connecting feeder cables and drop cables in FTTH fiber access networks.



With a waterproof and dustproof rating of IP65, this distribution box can withstand extreme weather conditions and protect the fiber optic cables inside. It ...



Client wiring device in FTTH optical network of optical fiber distribution box. It is mainly used for the end of optical transmission terminals, such as welding, sub light, distribution and other ...

## Contact Us

For more information, pricing, or custom solutions, please contact us:

Website: <https://www.indzawo.co.za>

Email: [sales@indzawo.co.za](mailto:sales@indzawo.co.za)

Phone: +27 71 296 8473

Address: 22 Quantum Street, Midrand, 1685, Gauteng, South Africa

This document is for informational purposes only. Specifications subject to change without notice.

