

Direct Burial Optical Cable Cabling Construction



Direct Burial Optical Cable Cabling Construction



This guide explains the common cable constructions, when to choose direct-burial, a practical installation workflow, and the best practices that minimize downtime and ...



Direct burial cable is electrical cable listed and marked for installation directly in the earth without protective conduit. It features moisture-resistant insulation, UV-stabilized jackets, and reinforced ...



Direct buried fiber optic cable installation practices are essentially the same as those used for placing copper cable. The following methods of direct burial of fiber optic cables will be addressed: plowing ...



Home / Instruction Sheets / Fiber Optic Cable Direct Burial Guidelines. Need Help?



Learn how to install underground fiber optic cables safely and efficiently. Explore trenching, conduit selection, direct burial methods, splicing, ...



A direct-burial fiber cable is manufactured and jacketed to be installed straight in the ground without continuous conduit protection. Compared with conduit-and-pull methods, direct-burial can reduce ...



When planning a fiber optic network installation, one of the most common questions is: How deep are fiber optic cables buried? Proper burial depth is critical for the safety, durability, and performance of ...



Direct buried fiber optic cable installation practices are essentially the same as those used for placing copper cable. The following methods of direct burial of fiber optic cables will be addressed: plowing ...



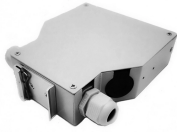
Personnel feeding cable into a feed-chute must make sure that they do not position themselves inside a cable loop. Hearing protection may be required by vehicle operators. Pre-ripping provides a safety ...



Confidently choose between direct burial, duct, trough and micro-duct for your underground fiber project. This practical guide covers cable structures, ...



Fiber optic cable transmits data as pulses of light through thin strands of glass, offering superior bandwidth and distance capabilities compared to traditional copper wiring. Direct burial is a ...



3.1. Cable plows are generally of two types: static and vibratory. Steerable plows, which can be offset to place the cable away from the centerline of the cable plow prime mover, are available for both types.

Contact Us

For more information, pricing, or custom solutions, please contact us:

Website: <https://www.indzawo.co.za>

Email: sales@indzawo.co.za

Phone: +27 71 296 8473

Address: 22 Quantum Street, Midrand, 1685, Gauteng, South Africa

This document is for informational purposes only. Specifications subject to change without notice.

